


LOC/DME I-KOA <b>109.7</b> Chan 34	APP CRS <b>174°</b>	Rwy Ldg <b>11000</b> TDZE <b>51</b> Apt Elev <b>51</b>
--	------------------------	--

# ILS or LOC RWY 17

ELLISON ONIZUKA KONA INTL AT KEAHOLE (KOA)(PHKO)

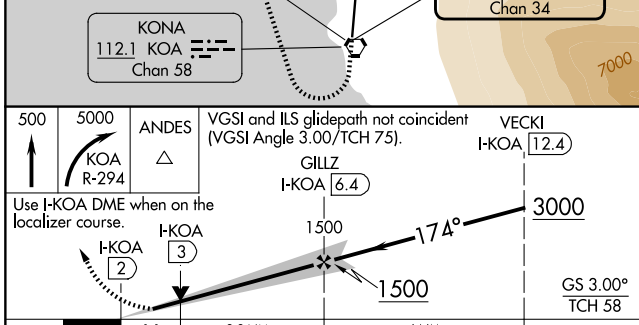
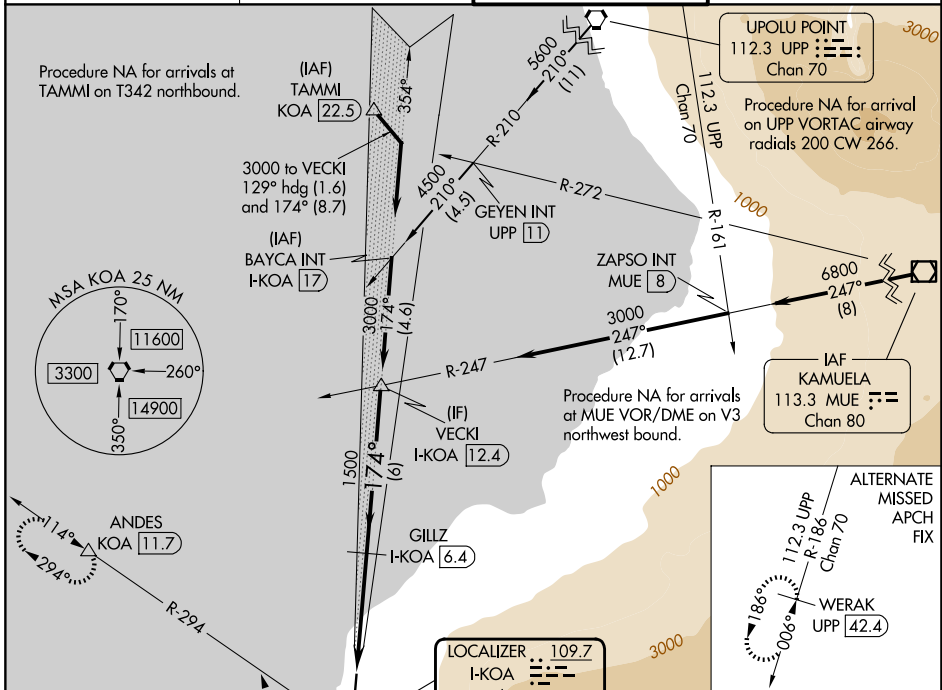
DME required.


**⚠** Autopilot coupled approach NA below 500. Circling NA east of Rwy 17-35. For inop ALS, increase S-ILS 17 Cat E visibility to 3/4 SM and S-LOC 17 Cats C/D/E visibility to 1 1/2 SM.

**MALSR** 

**MISSED APPROACH:** Climb to 500 then climbing right turn to 5000 on KOA VORTAC R-294 to ANDES/KOA VORTAC 11.7 DME and hold, continue climb-in-hold to 5000.

ATIS <b>127.4</b>	HCF CENTER <b>118.45 278.3</b>	KONA TOWER★ <b>120.3 (CTAF) 0 254.3</b>	GND CON <b>121.9</b>
----------------------	-----------------------------------	--	-------------------------



ELEV 51	<b>D</b>	TDZE 51			
CATEGORY	A	B	C	D	E
S-ILS 17	251-1/2 200 (200-1/2)				
S-LOC 17	460-1/2	409 (500-1/2)	460-3/4 409 (500-3/4)		
CIRCLING	520-1	469 (500-1)	520-1 1/2	469 (500-1 1/2)	620-2 569 (600-2)
REIL Rwy 17					
HIRL Rwy 17-35 					

PAC: 09 JUL 2026 to 03 SEP 2026

PAC: 09 JUL 2026 to 03 SEP 2026