

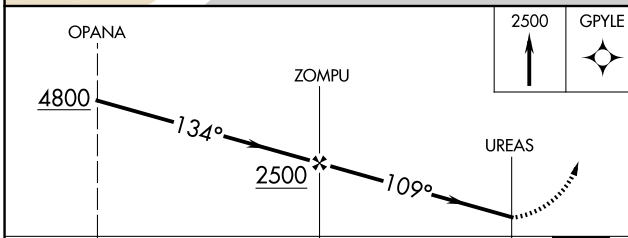
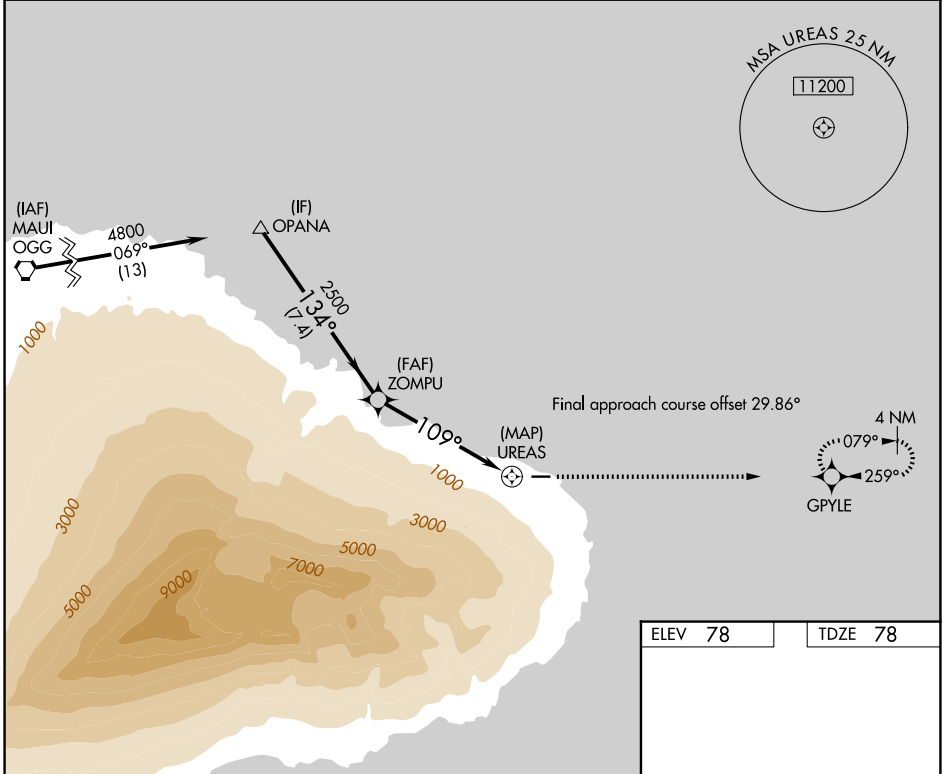
APP CRS	Rwy Ldg	<b>3606</b>
<b>109°</b>	TDZE	<b>78</b>
	Apt Elev	<b>78</b>

# RNAV (GPS) RWY 8

HANA (HNM)(PHHN)

RNP APCH.	<p>▼ Circling NA south of Rwy 8-26. Procedure NA at night.          ▲ NA Rwy 8 helicopter visibility reduction below 1 SM NA.          When local altimeter setting not received, procedure NA.</p>	MISSED APPROACH: Climb to 2500 direct GPLYE and hold.

AWOS-3PT <b>118.325</b>	HCF CENTER <b>118.45 278.3</b>	CLNC DEL <b>122.3</b>	CTAF <b>122.9 0</b>
----------------------------	-----------------------------------	--------------------------	------------------------



ELEV <b>78</b>	TDZE <b>78</b>
MIRL Rwy 8-26 0	

CATEGORY	A	B	C	D
RNAV MDA	1500-1¼ 1422 (1500-1¼)	1500-1½ 1422 (1500-1½)	NA	
CIRCLING	1500-1¼ 1422 (1500-1¼)	1500-1½ 1422 (1500-1½)	NA	

PAC: 09 JUL 2026 to 03 SEP 2026

PAC: 09 JUL 2026 to 03 SEP 2026