


LOC/DME I-LIH 110.9 Chan 46	APP CRS 349°	Rwy Ldg TDZE Apt Elev	6500 96 152
--	------------------------	-----------------------------	--

ILS or LOC RWY 35

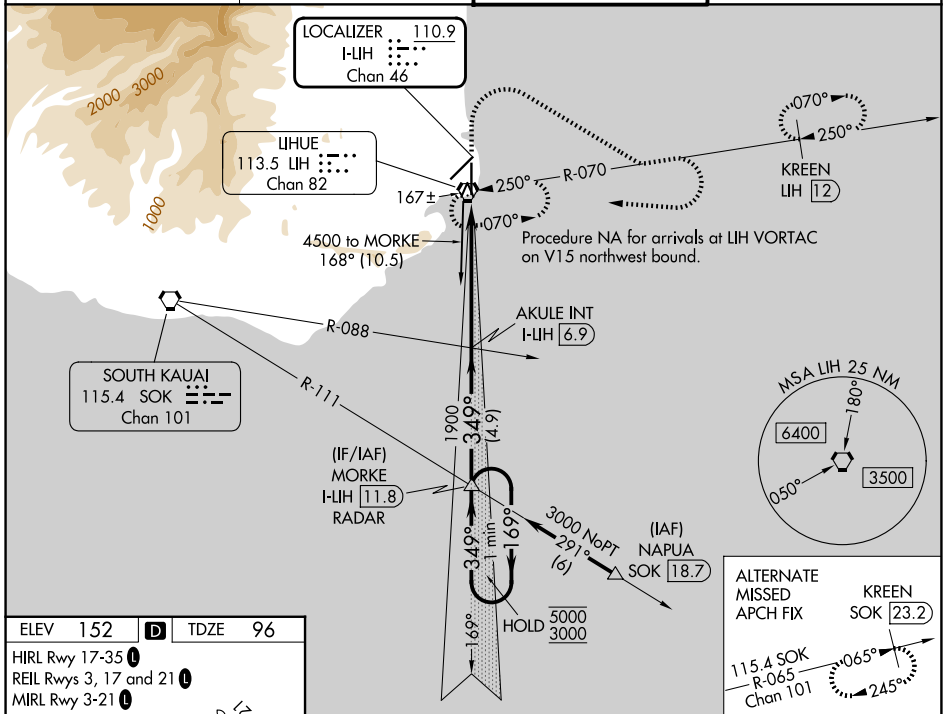
LIHUE (LIH)(PHLI)

⚠ Circling NA at night. Circling NA west of Rwy 17-35. For inop ALS, increase S-ILS 35 Cat E visibility to 3/4 SM and increase S-LOC 35 Cat E visibility to 1 SM.

MALSRS 

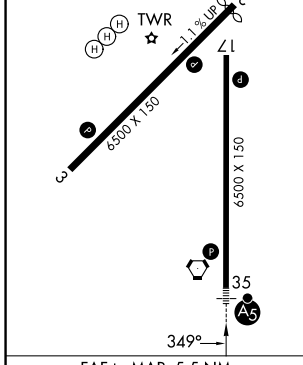
MISSED APPROACH: Climb to 600 then climbing right turn to 3000 on heading 110° and LIH VORTAC R-070 then climbing right turn to 4000 direct LIH VORTAC and hold. (TACAN or DME equipped aircraft continue on LIH VORTAC R-070 to KREEN/LIH VORTAC 12 DME and hold, east, RT, 250° inbound, continue climb-in-hold to 3000).

ATIS 127.2	HCF CENTER 126.5 269.4	LIHUE TOWER* 118.9 (CTAF) 0 263.1	GND CON 121.9
----------------------	----------------------------------	--	-------------------------

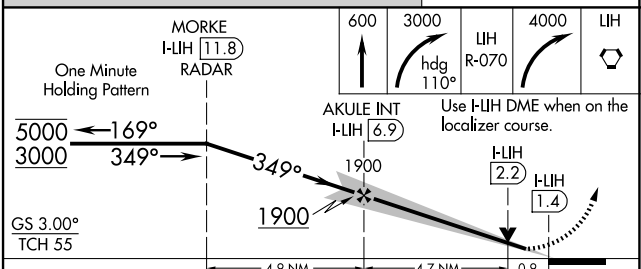


ELEV 152	D	TDZE 96
----------	----------	---------

HIRL Rwy 17-35 **Ⓛ**
REIL Rwy 3, 17 and 21 **Ⓛ**
MIRL Rwy 3-21 **Ⓛ**



Knots	60	90	120	150	180
Min:Sec	5:30	3:40	2:45	2:12	1:50



CATEGORY	A	B	C	D	E
S-ILS 35	296-1/2 200 (200-1/2)				
S-LOC 35	420-1/2 324 (300-1/2)				
CIRCLING	520-1 368 (400-1)	620-1 468 (500-1)	620-1 1/2 468 (500-1 1/2)	720-2 568 (600-2)	740-2 588 (600-2)

PAC: 09 JUL 2026 to 03 SEP 2026

PAC: 09 JUL 2026 to 03 SEP 2026