

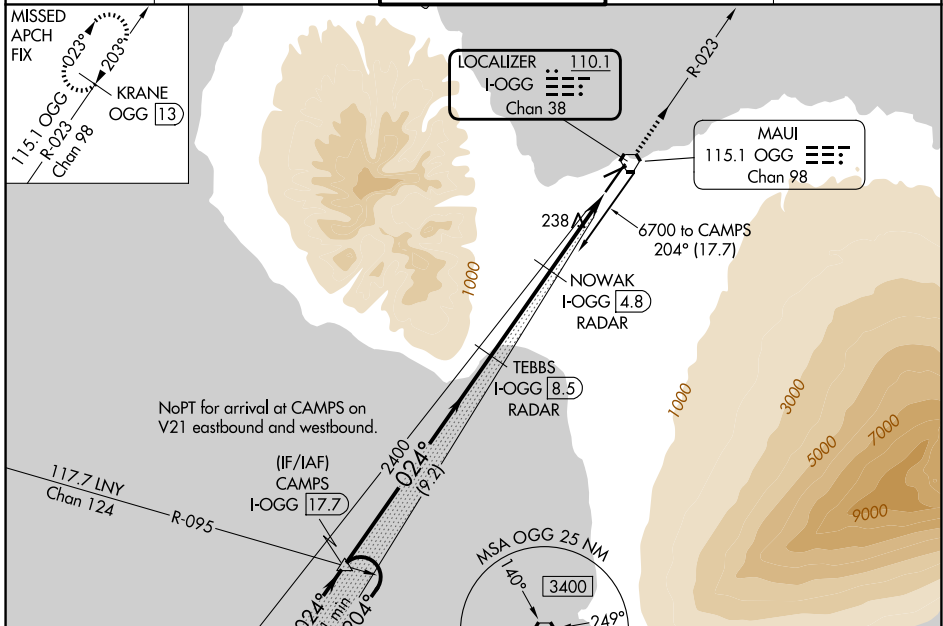
LOC/DME I-OGG <b>110.1</b> Chan <b>38</b>	APP CRS <b>024°</b>	Rwy Ldg TDZE Apt Elev <b>6995</b> <b>55</b> <b>55</b>
---	------------------------	--

# ILS Y or LOC Y RWY 2

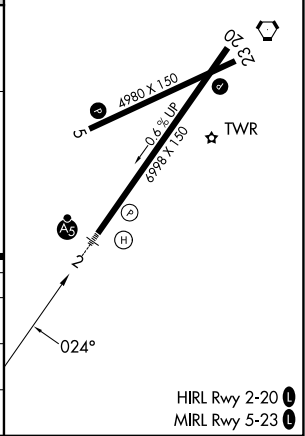
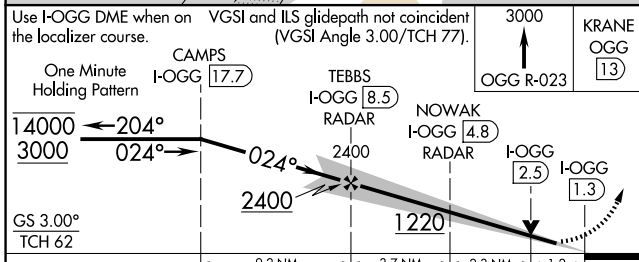
KAHALUI (OGG)(PHOG)

DME required.		MALSR	MISSED APPROACH: Climb to 3000 on OGG VORTAC R-023 to KRANE/OGG 13 DME and hold.
<p>▼ For inop ALS, increase S-ILS 2 Cat E visibility to 3/4 SM, and S-LOC 2 Cats C/D/E visibility to 1 1/8 SM.</p>			

ATIS <b>128.6</b>	HCF APPROACH <b>120.2 322.4 (N)</b> <b>119.5 225.4 (S)</b>	MAUI TOWER★ <b>118.7 (CTAF) 0 279.6</b>	GND CON <b>121.9 279.6</b>	UNICOM <b>122.95</b>
----------------------	--	--	-------------------------------	-------------------------



ELEV 55	TDZE 55
---------	---------



CATEGORY	A	B	C	D	E
S-ILS 2	275-1/2 220 (300-1/2)				
S-LOC 2	520-1/2	465 (500-1/2)	520-1 465 (500-1)		
CIRCLING	520-1 465 (500-1)	620-1 565 (600-1)	800-2 1/4 745 (800-2 1/4)	1160-3 1105 (1200-3)	1720-3 1665 (1700-3)

PAC: 09 JUL 2026 to 03 SEP 2026

PAC: 09 JUL 2026 to 03 SEP 2026