

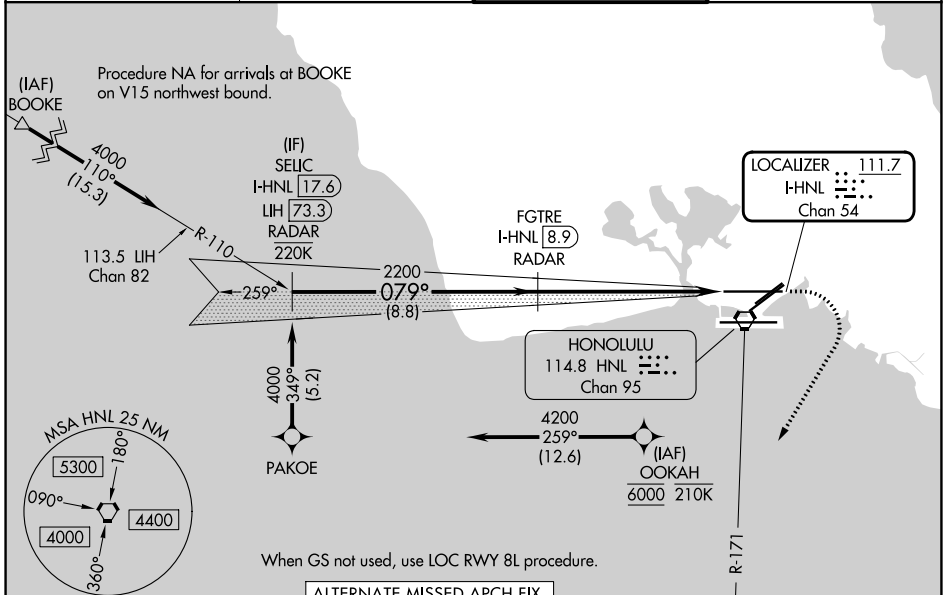
LOC/DME I-HNL 111.7 Chan 54	APP CRS 079°	Rwy Ldg 12245 TDZE 14 Apt Elev 14
--	------------------------	--

ILS RWY 8L

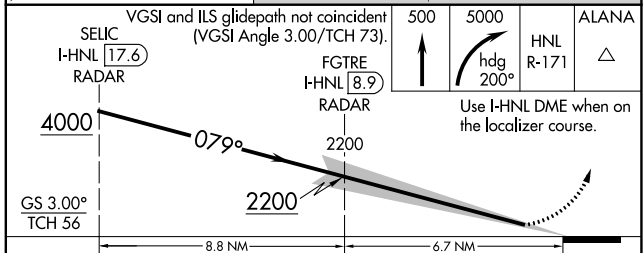
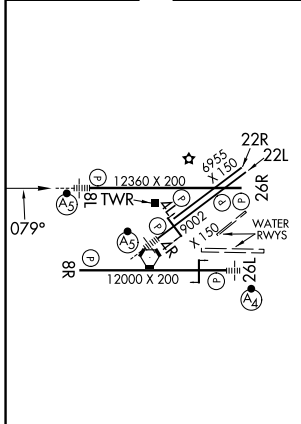
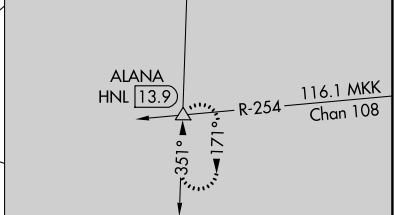
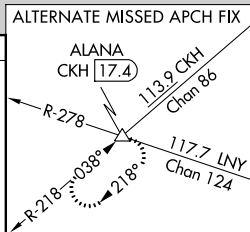
DANIEL K INOUE INTL (HNL) (PHNL)

RNP APCH - GPS. From OOKAH or BOOKE. DME or RADAR required.	MAISR 	MISSED APPROACH: Climb to 500 then climbing right turn to 5000 on heading 200° and HNL VORTAC R-171 to ALANA INT/HNL 13.9 DME and hold, continue climb-in-hold to 5000.
<p>▼ For inop ALS, increase Cat E visibility to ¾ SM. OOKAH transition NA for Cat E aircraft. Cat E restricted to USAF/USN aircraft.</p>		

D-ATIS 127.9 251.15	HCF APPROACH 118.3 269.0	HONOLULU TOWER 118.1 257.8 123.9 273.575 (8R/26L)	GND CON 121.9 348.6
-------------------------------	------------------------------------	---	-------------------------------



ELEV 14	D	TDZE 14
---------	----------	---------



CATEGORY	A	B	C	D	E
S-ILS 8L	214-½ 200 (200-½)				

PAC: 09 JUL 2026 to 03 SEP 2026

PAC: 09 JUL 2026 to 03 SEP 2026