

APP CRS	Rwy Idg	5086
175°	TDZE	3176
	Apt Elev	3176

RNAV (GPS) RWY 17

LUBBOCK EXEC AIRPARK (F82)

RNP APCH - GPS.

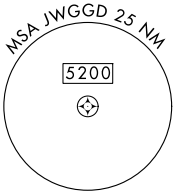
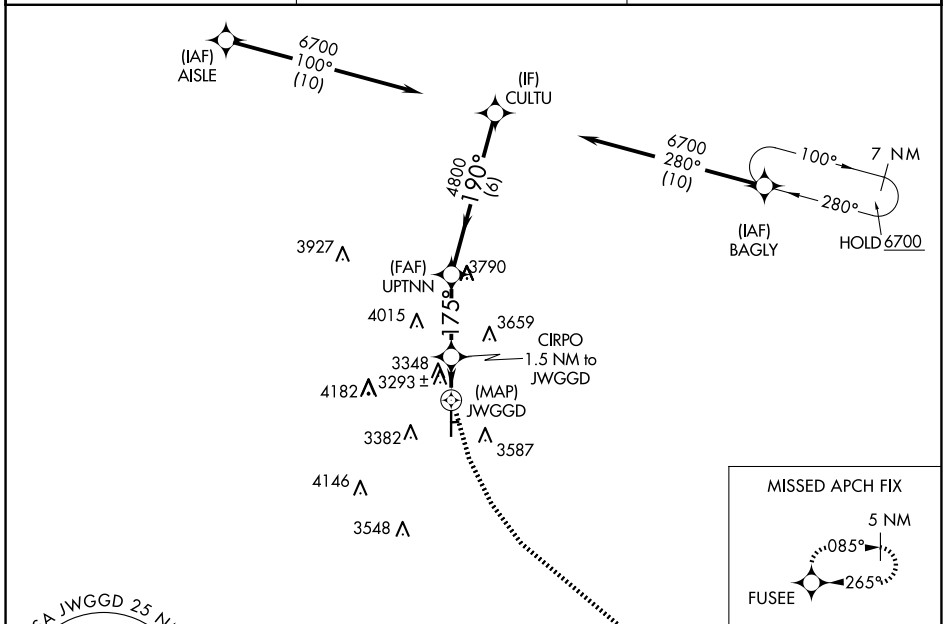
▼ Use LBB altimeter setting.
▲ NA Rwy 17 helicopter visibility reduction below 1 SM NA.
 Circling NA east of Rwy 17-35.

MISSED APPROACH: Climbing left turn to 5000 direct FUSEE and hold.

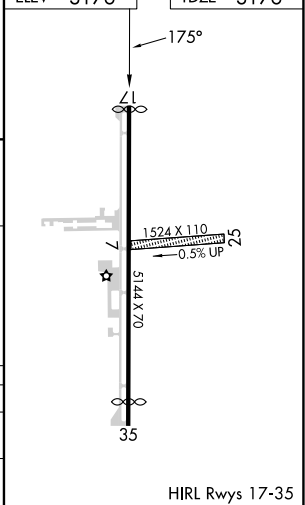
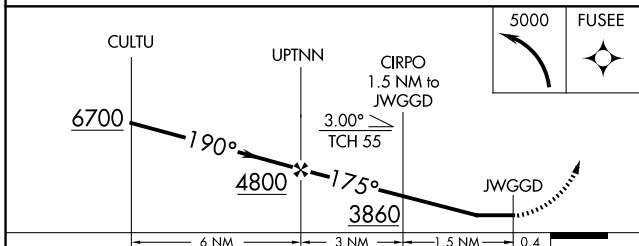
LBB ASOS
125.3 270.275

LUBBOCK APP CON
119.2 351.8

UNICOM
122.8 (CTAF)



ELEV 3176	TDZE 3176
-----------	-----------



CATEGORY	A	B	C	D
LNVA MDA	3640-1	464 (500-1)	3640-1 3/8 464 (500-1 3/8)	NA
CIRCLING	3700-1 524 (600-1)	3740-1 564 (600-1)	4580-3 1404 (1500-3)	NA

SC-2, 11 JUN 2026 to 09 JUL 2026

SC-2, 11 JUN 2026 to 09 JUL 2026

HIRL Rwy 17-35