

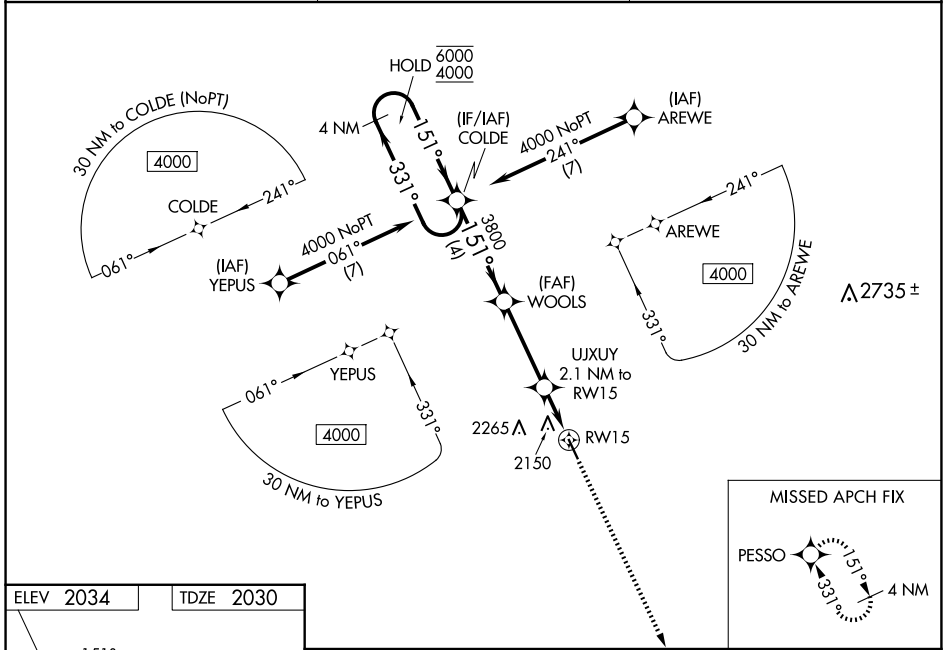
| | | |
|--|------------------------|---|
| WAAS CH 58047 W15A | APP CRS 151° | Rwy Ldg 4364 TDZE 2030 Apt Elev 2034 |
|--|------------------------|---|

RNAV (GPS) RWY 15

ASHLEY MUNI (ASY)

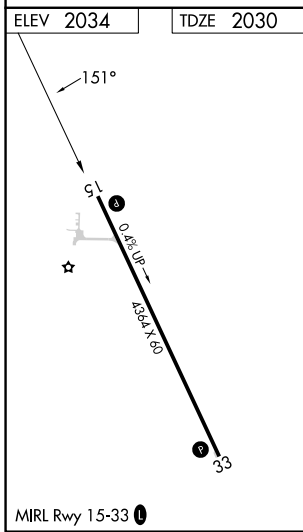
| | |
|---|---|
| RNP APCH - GPS. | MISSED APPROACH: Climb to 4000 direct PESSO and hold. |
| ▽ Baro-VNAV NA. Rwy 15 helicopter visibility reduction below 3/4 SM NA. ▲ NA Use 712 altimeter setting; when not received, use MBG altimeter setting and increase LPV DA to 2448 feet and all visibilities 1/8 SM. Increase LNAV/VNAV DA to 2477 feet and all visibilities 1/4 SM. Increase all MDAs 40 feet and LNAV visibility Cat C/D 1/4 SM, and Circling visibility Cat C 1/4 SM. | |

| | | |
|------------------------------|---|----------------------|
| 712 AWOS-3 118.175 | MINNEAPOLIS CENTER 135.25 256.7 | CTAF 122.9 |
|------------------------------|---|----------------------|



NC-1, 11 JUN 2026 to 09 JUL 2026

NC-1, 11 JUN 2026 to 09 JUL 2026



| | | | |
|--|----------------------------|----------------------------|----------------------------------|
| VGSi and RNAV glidepath not coincident (VGSi Angle 3.00/TCH 27). | | | |
| 4000 PESSO | 4000 COLDE | 3800 WOOLS | 2720 UJXUY 2.1 NM to RW15 |
| 4 NM Holding Pattern 6000 4000 | 4 NM 331° 151° | 4 NM 151° 3800 | 3.4 NM 2720 2.1 NM RW15 |
| GP 3.00° TCH 40 | | | |
| CATEGORY | A | B | C |
| LPV DA | 2408-1 378 (400-1) | | |
| LNAV/VNAV DA | 2437-1 1/8 407 (500-1 1/8) | | |
| LNAV MDA | 2540-1 510 (600-1) | 2540-1 3/8 510 (600-1 3/8) | |
| CIRCLING | 2600-1 566 (600-1) | 2700-1 666 (700-1) | 2800-2 1/2 766 (800-2 1/2) |