

APP CRS	Rwy Ldg	<b>5002</b>
<b>140°</b>	TDZE	<b>298</b>
	Apt Elev	<b>301</b>

# RNAV (GPS) RWY 14

FRANKLIN FLD (Ø7A)

RNP APCH - GPS.

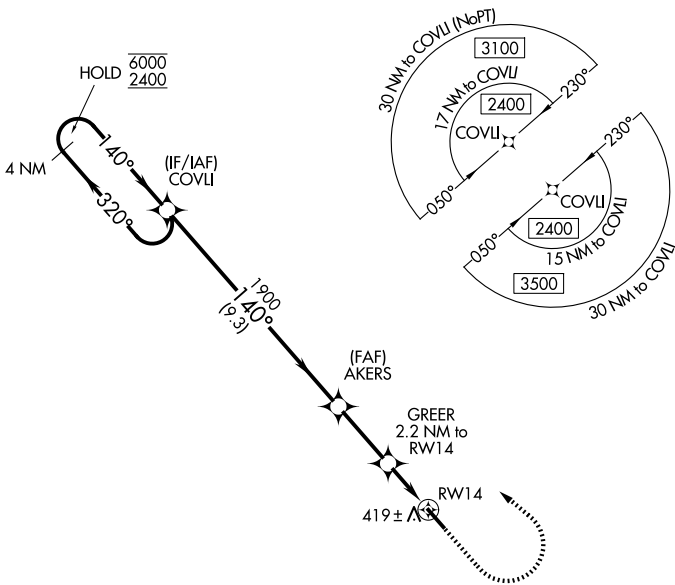
**⚠** Rwy 14 helicopter visibility reduction below 1 SM NA.  
**⚠** NA Procedure NA at night. Use Troy altimeter setting.

MISSED APPROACH: Climb to 900 then climbing left turn to 2400 direct COVLI and hold.

TOI ASOS  
**120.925**

MONTGOMERY APP CON \*  
**121.2 269.05**

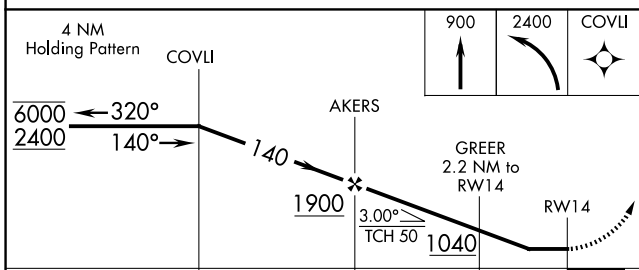
UNICOM  
**122.8 (CTAF) 0**



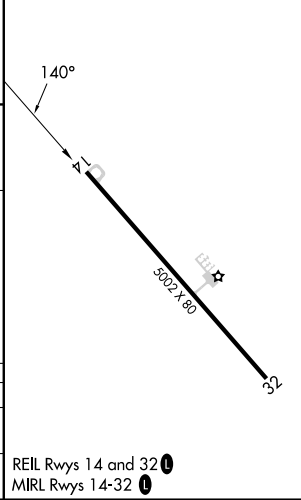
SE-4, 11 JUN 2026 to 09 JUL 2026

SE-4, 11 JUN 2026 to 09 JUL 2026

ELEV	301	TDZE	298
------	-----	------	-----



CATEGORY	A	B	C	D
LNVA MDA	740-1	442 (500-1)	740-1 <sup>3</sup> / <sub>8</sub>	442 (500-1 <sup>3</sup> / <sub>8</sub> )
CIRCLING	840-1	539 (600-1)	900-1 <sup>1</sup> / <sub>2</sub> 599 (600-1 <sup>1</sup> / <sub>2</sub> )	1060-2 <sup>1</sup> / <sub>2</sub> 759 (800-2 <sup>1</sup> / <sub>2</sub> )



REIL Rwy 14 and 32 **0**  
 MIRL Rwy 14-32 **0**