

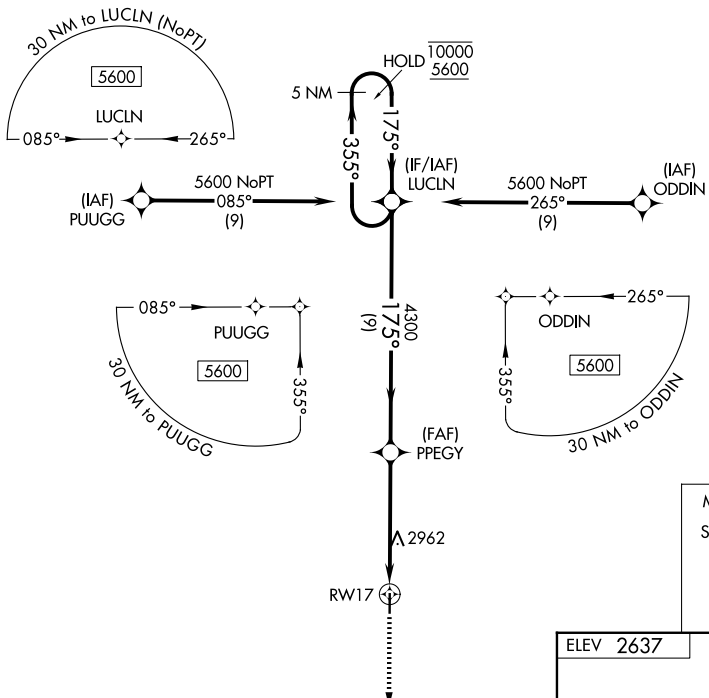
WAAS CH <b>81944</b> <b>W17A</b>	APP CRS <b>175°</b>	Rwy Ldg <b>4000</b> TDZE <b>2637</b> Apt Elev <b>2637</b>
--	------------------------	---

# RNAV (GPS) RWY 17

GOVE COUNTY (1QK)

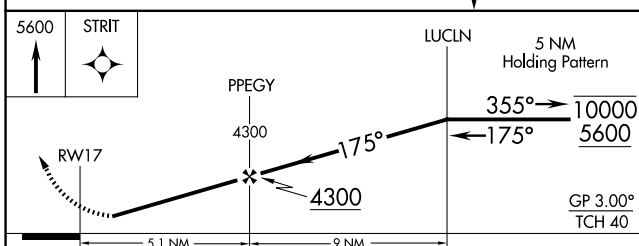
RNP APCH-GPS.	MISSED APPROACH: Climb to 5600 direct STRIT and hold.
<p>▼ Rwy 17 helicopter visibility reduction below 3/4 SM NA.</p> <p>▲ NA Baro-VNAV NA. Use Hill City altimeter setting.</p>	

HLC ASOS <b>118.425</b>	DENVER CENTER <b>132.7 226.675</b>	CTAF <b>122.90</b>
----------------------------	---------------------------------------	-----------------------



NC-2, 11 JUN 2026 to 09 JUL 2026

NC-2, 11 JUN 2026 to 09 JUL 2026



ELEV 2637	TDZE 2637
MIRL Rwy 17-35	

CATEGORY	A	B	C	D
LPV DA	3007-1	370 (400-1)		NA
LNAV/VNAV DA	3430-2 1/2	793 (800-2 1/2)		NA
LNAV MDA	3340-1	703 (800-1)		NA
CIRCLING	3340-1 703 (800-1)	3400-1 763 (800-1)		NA