

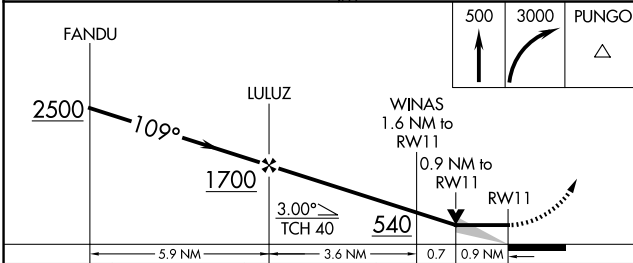
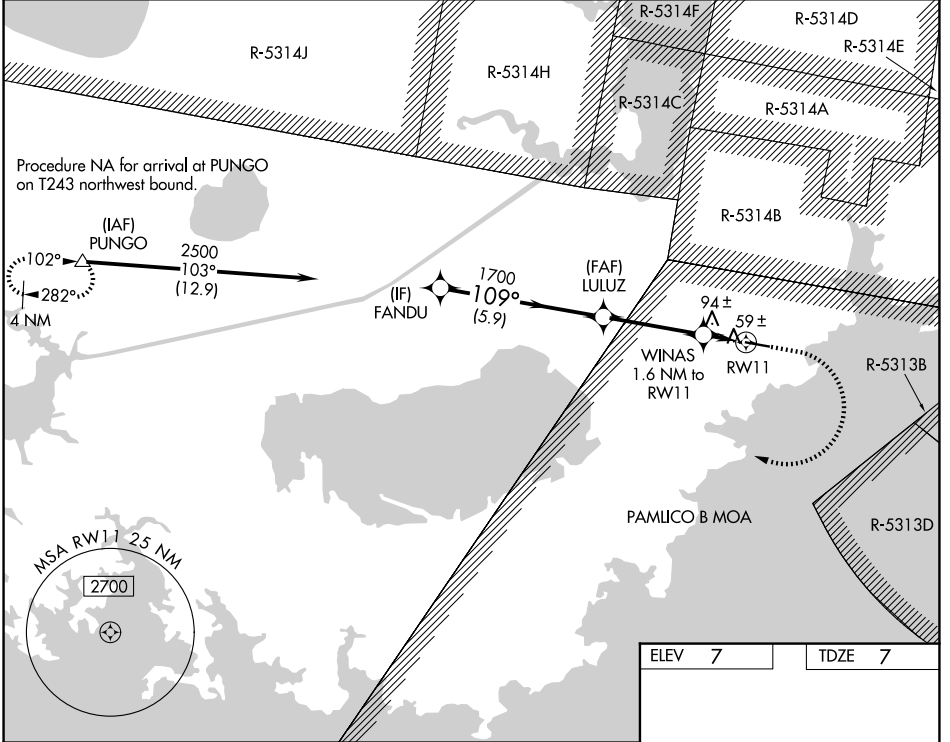
WAAS CH 40442 W11A	APP CRS 109°	Rwy Ldg TDZE Apt Elev	5002 7 7
----------------------------------------	------------------------	-----------------------------	-------------------------------------

RNAV (GPS) RWY 11

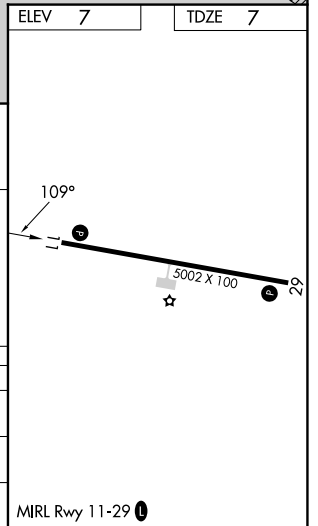
HYDE COUNTY (7W6)

RNP APCH - GPS.	MISSED APPROACH: Climb to 500 then climbing right turn 3000 direct PUNGO and hold.
∇ VDP NA when using HSE altimeter setting. When local altimeter setting not received, use HSE altimeter setting and increase all MDAs 80 feet.	

AWOS-3P 119.275	CHERRY POINT APP CON 119.75 360.775	UNICOM 122.7 (CTAF) Ⓛ
---------------------------	-----------------------------------------------	----------------------------------------



CATEGORY	A	B	C	D
LP MDA	320-1	313 (400-1)		NA
LNAV MDA	360-1	353 (400-1)		NA
CIRCLING	420-1 413 (500-1)	460-1 453 (500-1)		NA



SE-2, 11 JUN 2026 to 09 JUL 2026

SE-2, 11 JUN 2026 to 09 JUL 2026