

RNAV (GPS)-A

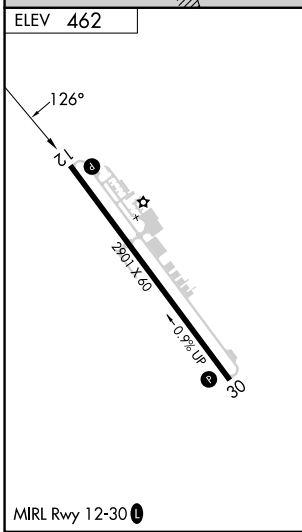
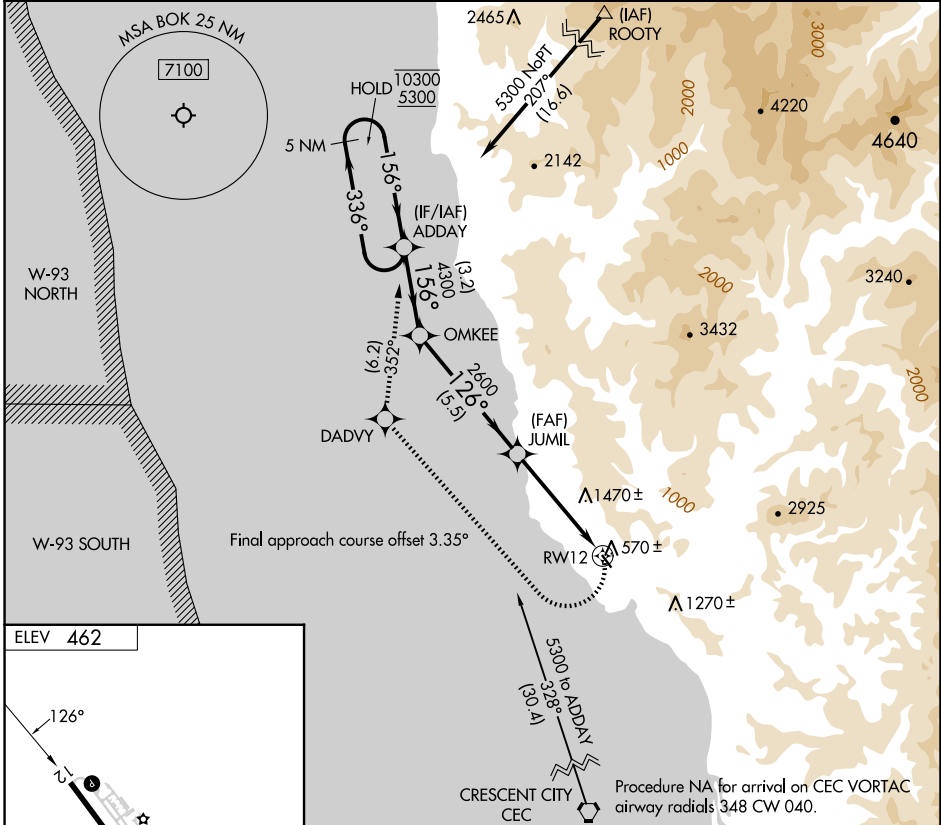
BROOKINGS (BOK)

APP CRS	Rwy Ldg	N/A
126°	TDZE	N/A
	Apt Elev	462

RNP APCH - GPS.
 Procedure NA at night. Circling NA northeast of Rwy 12-30.
 Rwy 12 and 30 helicopter visibility reduction below 1 SM NA.

MISSED APPROACH: Climbing right turn to 5300 direct DADVY, and on track 352° to ADDAY and hold, continue climb in hold to 5300.

AWOS-3PT 132.025	SEATTLE CENTER 124.85 306.3	UNICOM 122.8 (CTAF)
----------------------------	---------------------------------------	-------------------------------



	5 NM Holding Pattern	ADDAY	OMKEE	JUMIL	RW12
	10300	5300	4300	2600	
		336°	156°	126°	4.15° TCH 40
			3.2 NM	5.5 NM	4.8 NM
CATEGORY	A	B	C	D	
CIRCLING	1600-1¼ 1138 (1200-1¼)	1600-1½ 1138 (1200-1½)	NA		

NW-1, 11 JUN 2026 to 09 JUL 2026

NW-1, 11 JUN 2026 to 09 JUL 2026