

APP CRS	Rwy Ldg	<b>3000</b>
<b>170°</b>	TDZE	<b>273</b>
	Apt Elev	<b>273</b>

# RNAV (GPS) RWY 17

DEAN GRIFFIN MEML (M24)

RNP APCH - GPS.

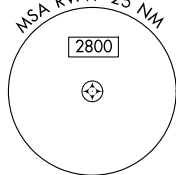
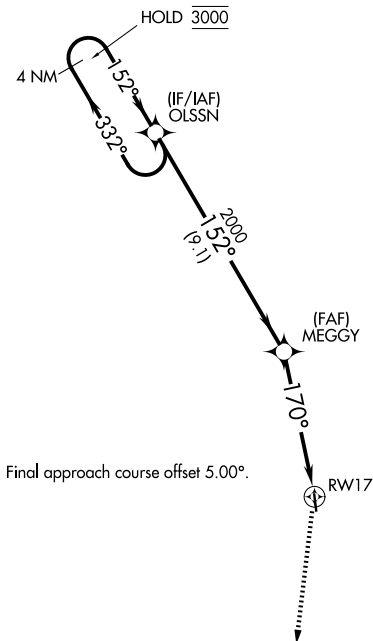
- ▼** Rwy 17 helicopter visibility reduction below 3/4 SM NA.
- ▲ NA** Use Hattiesburg Bobby L Chain Muni altimeter setting.

MISSED APPROACH: Climb to 3000 direct GABRY and hold, continue climb-in-hold to 3000.

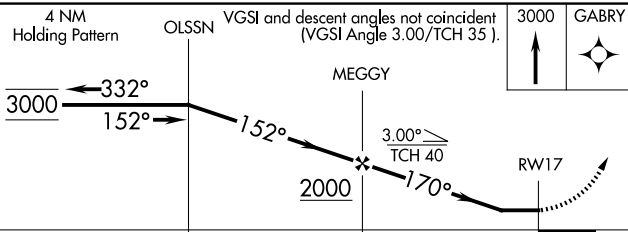
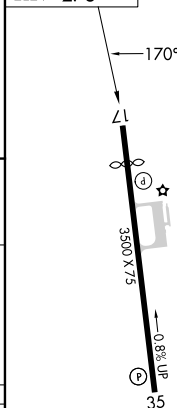
HBG ASOS  
**135.425**

GULFPORT APP CON ★  
**127.5 254.25**

UNICOM  
**122.8 (CTAF) 0**



ELEV 273 | TDZE 273



CATEGORY	A	B	C	D
LNAV MDA	880-1	607 (700-1)		NA
CIRCLING	880-1 607 (700-1)	1040-1 767 (800-1)		NA

MIRL Rwy 17-35 0

SC-4, 11 JUN 2026 to 09 JUL 2026

SC-4, 11 JUN 2026 to 09 JUL 2026