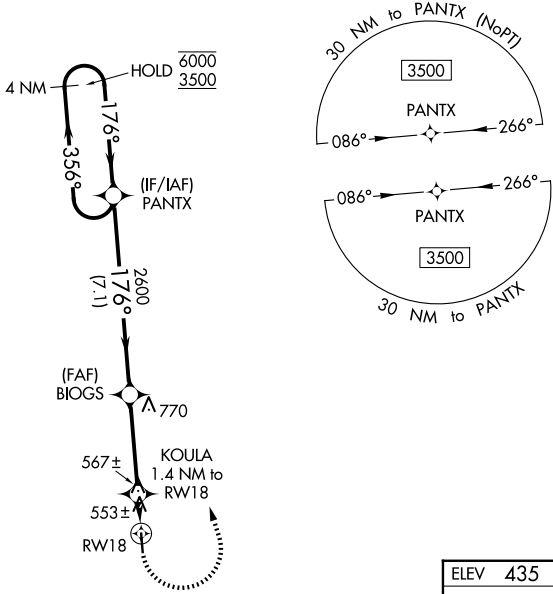


APP CRS	Rwy Ldg	<b>4007</b>
<b>176°</b>	TDZE	<b>435</b>
	Apt Elev	<b>435</b>

# RNAV (GPS) RWY 18

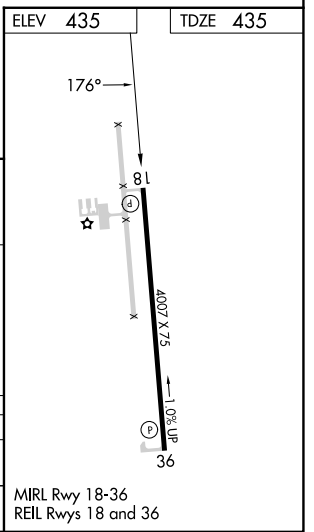
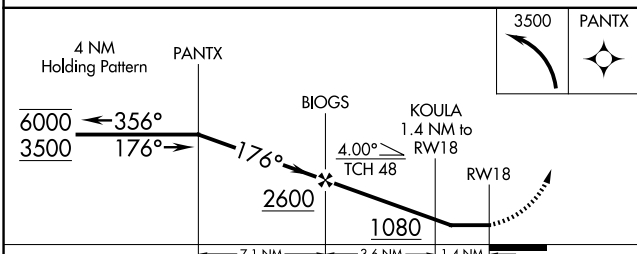
COPIAH COUNTY (M11)

RNP APCH.		MISSED APPROACH: Climbing left turn to 3500 direct PANTX and hold, continue climb-in-hold to 3500.	
<p><b>▼</b> Rwy 18 helicopter visibility reduction below 1 SM NA. Use Brookhaven altimeter setting, when not received, use Hawkins Fld altimeter setting and increase all MDA 40 feet. Straight-in Rwy 18 NA at night, Circling Rwy 18 NA at night.</p> <p><b>▲ NA</b></p>	1R7 AWOS-3P <b>118.125</b>	MEMPHIS CENTER <b>132.5 259.1</b>	CTAF <b>122.9</b>



SC-4, 11 JUN 2026 to 09 JUL 2026

SC-4, 11 JUN 2026 to 09 JUL 2026



CATEGORY	A	B	C	D
LNVA MDA	860-1	425 (500-1)	NA	NA
CIRCLING	940-1 505 (600-1)	1140-1 705 (800-1)	NA	NA

MIRL Rwy 18-36  
REIL Rws 18 and 36