

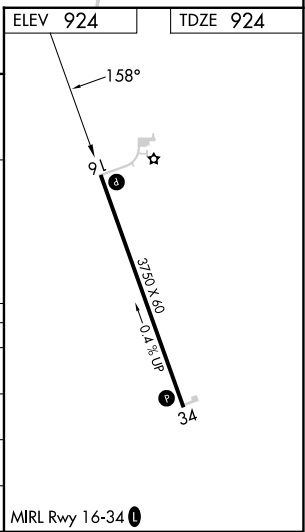
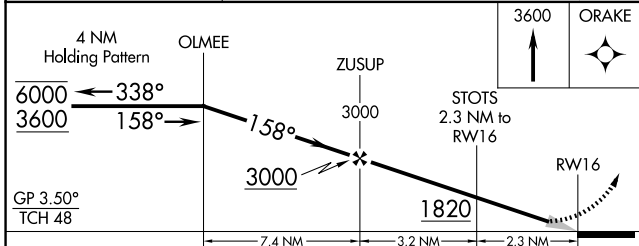
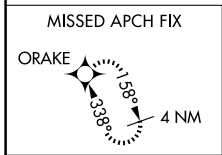
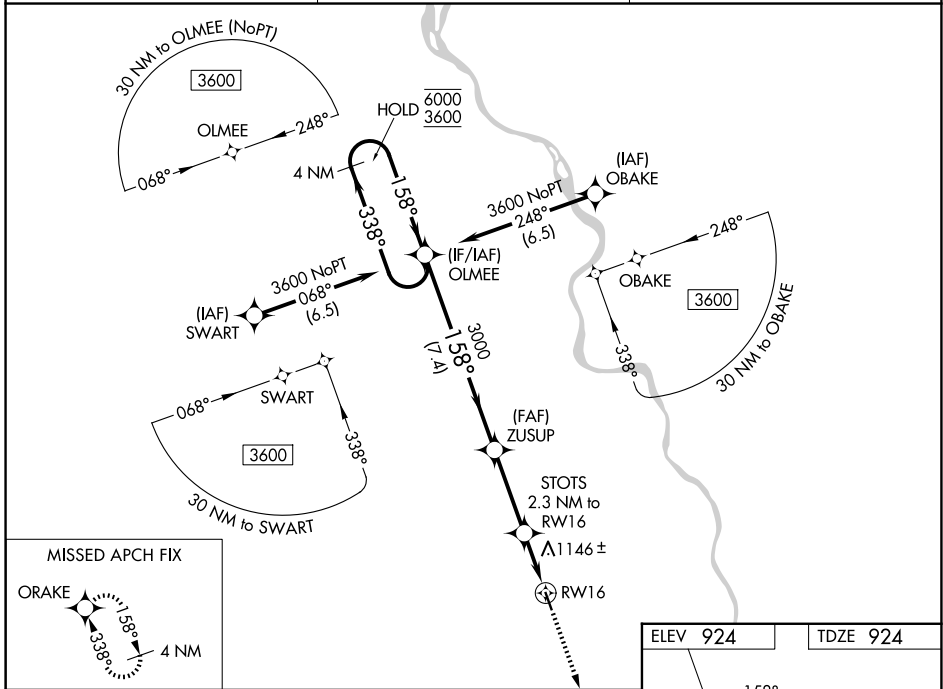
WAAS CH 49142 W16A	APP CRS 158°	Rwy Ldg 3750 TDZE 924 Apt Elev 924
--	------------------------	---

RNAV (GPS) RWY 16

FARINGTON FLD (K01)

RNP APCH - GPS.	MISSED APPROACH: Climb to 3600 direct ORAKE and hold.
<p>▼ Circling NA for Cat C west of Rwy 16-34.</p> <p>▲ NA Baro-VNAV NA.</p> <p>Use FNB altimeter setting.</p>	

FNB ASOS 119.275	MINNEAPOLIS CENTER 128.75 346.3	CTAF 122.9
----------------------------	---	----------------------



CATEGORY	A	B	C	D
LPV DA	1180-1	256 (300-1)	1250-1 326 (400-1)	NA
LNAV/VNAV DA	1480-1½ 556 (600-1½)			NA
LNAV MDA	1480-1	556 (600-1)	1480-1½ 556 (600-1½)	NA
CIRCLING	1500-1 576 (600-1)	1540-1 616 (700-1)	1580-1¾ 656 (700-1¾)	NA

NC-2, 11 JUN 2026 to 09 JUL 2026

NC-2, 11 JUN 2026 to 09 JUL 2026