

WAAS CH 82242 W17A	APP CRS 173°	Rwy Ldg TDZE Apt Elev	5500 1409 1409
--	------------------------	-----------------------------	---

RNAV (GPS) RWY 17

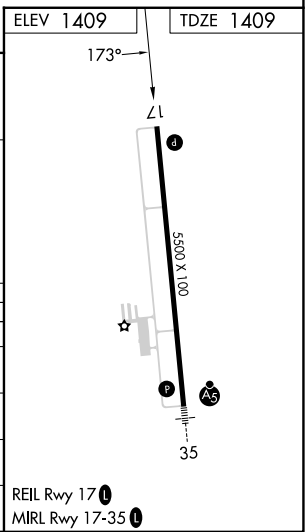
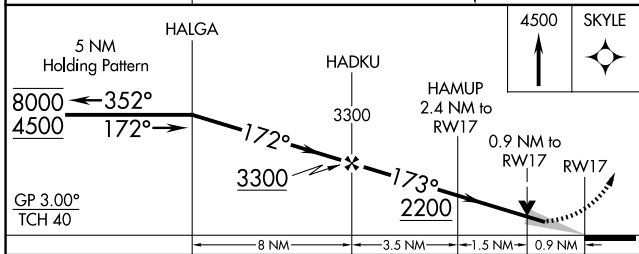
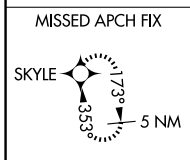
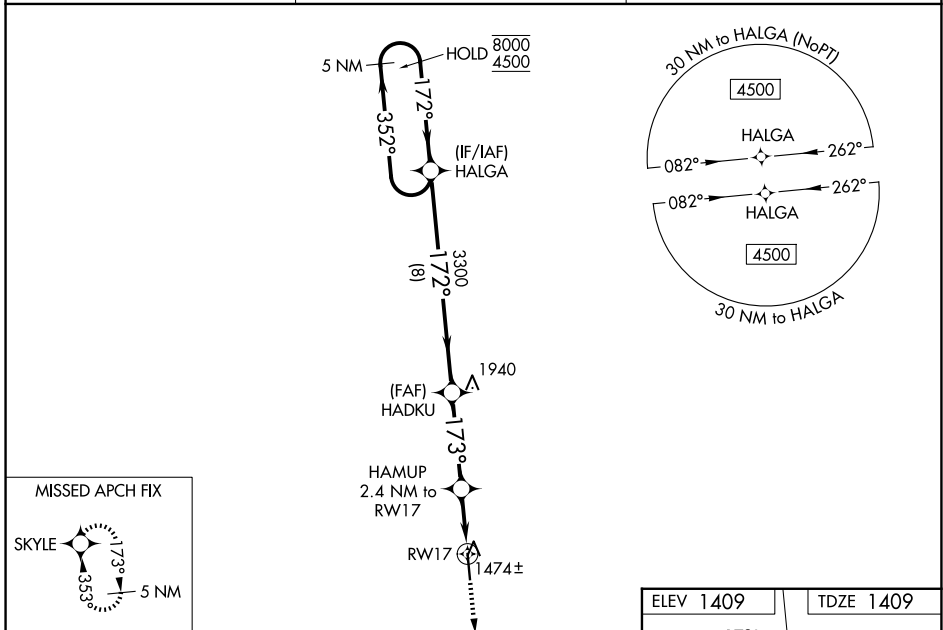
SIoux COUNTY RGnL (SXX)

RNP APCH - GPS.

⚠ Baro-VNAV and VDP NA when using LRJ altimeter setting. For uncompensated Baro-VNAV systems, LNAV/VNAV NA below -17°C or above 54°C. When local altimeter setting not received, use LRJ altimeter setting and increase: LPV and LNAV/VNAV DA to 1718 feet and all visibilities ½ SM; increase all MDAs 60 feet and LNAV visibility Cat C/D ½ SM.

MISSED APPROACH: Climb to 4500 direct SKYLE and hold, continue climb-in-hold to 4500.

AWOS-3P 120.075	SIoux CITY APP CON * 124.6 307.0	UNICOM 122.7 (CTAF)
---------------------------	--	-------------------------------



CATEGORY	A	B	C	D
LPV DA		1659-¾	250 (300-¾)	
LNAV/VNAV DA		1659-¾	250 (300-¾)	
LNAV MDA		1740-1	331 (400-1)	
CIRCLING	1820-1 411 (500-1)	2080-1 671 (700-1)	2080-2 671 (700-2)	2080-2¼ 671 (700-2¼)

NC-3, 11 JUN 2026 to 09 JUL 2026

NC-3, 11 JUN 2026 to 09 JUL 2026