

WAAS CH <b>81839</b> <b>W13A</b>	APP CRS <b>133°</b>	Rwy Ldg TDZE Apt Elev	<b>5701</b> <b>2948</b> <b>2965</b>
--	------------------------	-----------------------------	---

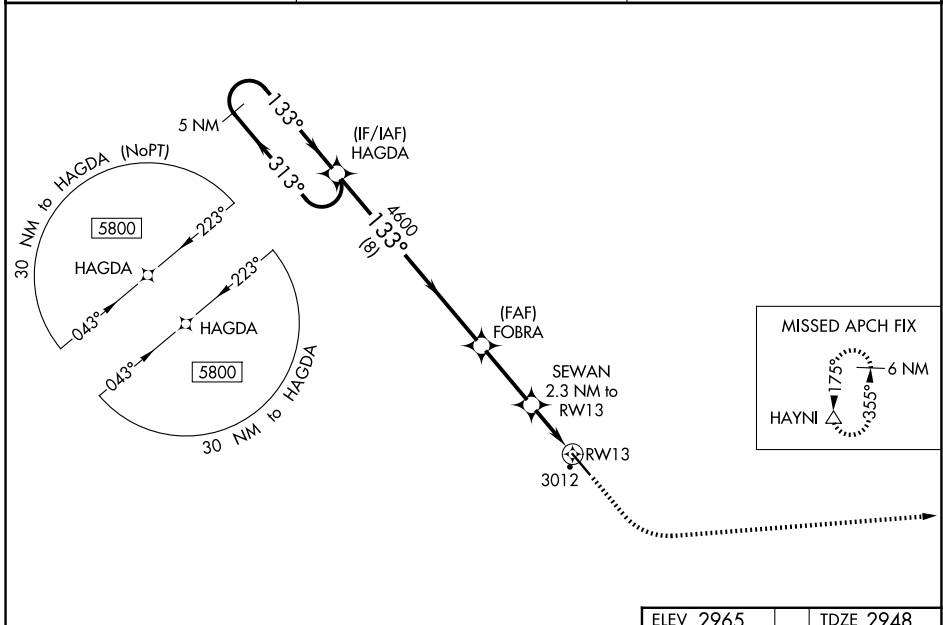
# RNAV (GPS) RWY 13

BOWMAN RGNL (BWW)

**⚠** For uncompensated Baro-VNAV systems, LNAV/VNAV NA below -20°C (-4°F) or above 54°C (130°F). DME/DME RNP-0.3 NA. When local altimeter setting not received, use Hetterger altimeter setting and increase all DA 102 feet, and all MDA 120 feet; increase LPV and LNAV/VNAV visibility ¼ mile all Cats, and LNAV Cat C visibility ⅓ mile. Baro-VNAV and VDP NA when using Hetterger altimeter setting.

**MISSED APPROACH:** Climb to 3400 then climbing left turn to 6000 direct HAYNI and hold.

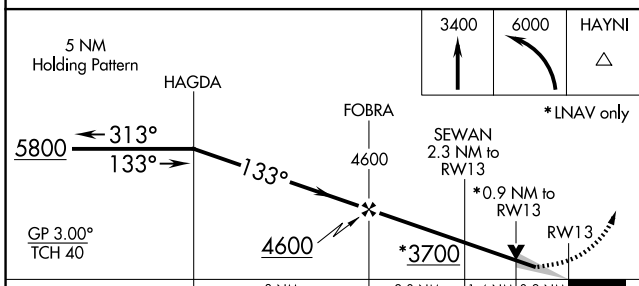
AWOS-3PT <b>118.075</b>	SALT LAKE CITY CENTER <b>126.85 305.2</b>	UNICOM <b>122.8 (CTAF) 1</b>
----------------------------	--	---------------------------------



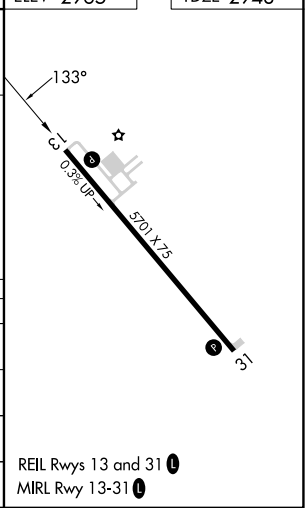
NC-1, 11 JUN 2026 to 09 JUL 2026

NC-1, 11 JUN 2026 to 09 JUL 2026

ELEV 2965	TDZE 2948
-----------	-----------



CATEGORY	A	B	C	D
LPV DA		3198-1	250 (300-1)	
LNAV/VNAV DA		3198-1	250 (300-1)	
LNAV MDA		3280-1	332 (400-1)	
CIRCLING	3380-1 415 (500-1)	3420-1 455 (500-1)	3580-1¾ 615 (700-1¾)	3580-2 615 (700-2)



REIL Rwy 13 and 31 1  
MIRL Rwy 13-31 1