

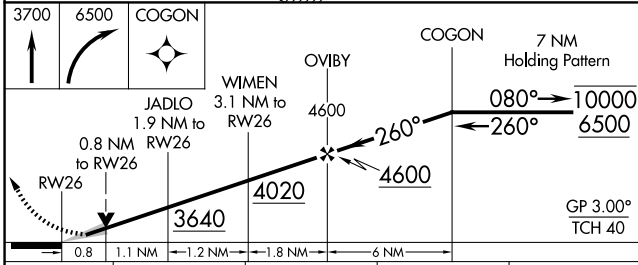
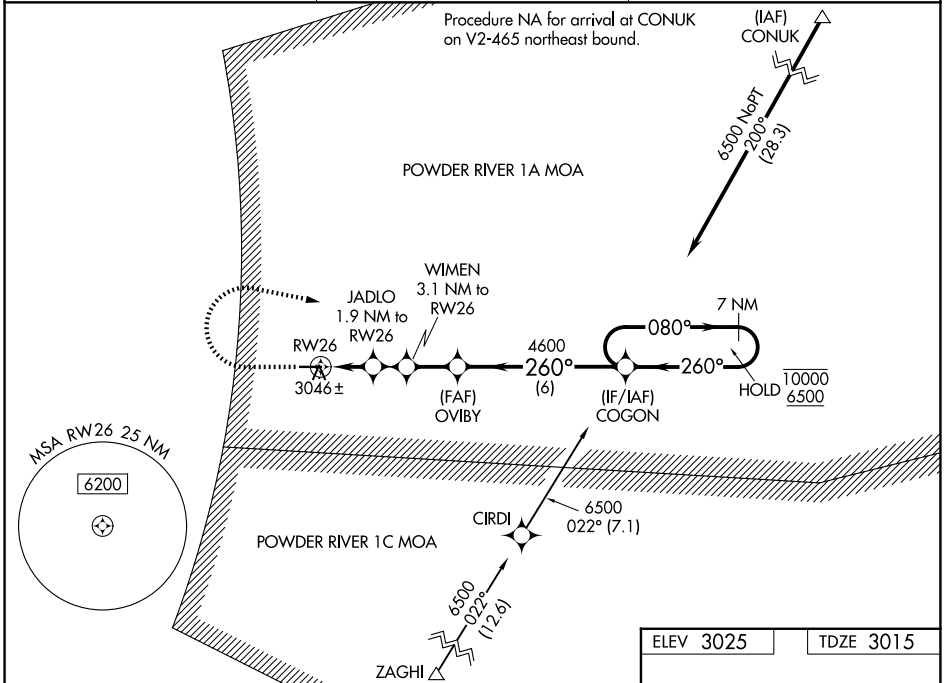
WAAS CH 65644 W26A	APP CRS 260°	Rwy Ldg 4491 TDZE 3015 Apt Elev 3025
--	------------------------	--

RNAV (GPS) RWY 26

BIG HORN COUNTY (ØØU)

RNP APCH-GPS.	MISSED APPROACH: Climb to 3700 then climbing right turn to 6500 direct COGON and hold, continue climb-in-hold to 6500.
<p>▼</p> <p>▲ For uncompensated Baro-VNAV systems, LNAV/VNAV NA below -20°C or above 54°C.</p>	

AWOS-3 118.325	SALT LAKE CENTER 132.425 317.45	UNICOM 122.8 (CTAF) ①
--------------------------	---	---------------------------------



ELEV 3025	TDZE 3015
<p>GP 3.00° TCH 40</p> <p>4491 X 75 → -0.5% UP</p>	
MIRL Rwy 8-26 ①	

CATEGORY	A	B	C	D
LPV DA	3215-1	200 (200-1)		NA
LNAV/VNAV DA	3265-1	250 (300-1)		NA
LNAV MDA	3300-1	285 (300-1)		NA
CIRCLING	3480-1 455 (500-1)	3500-1 475 (500-1)		NA

NW-1, 11 JUN 2026 to 09 JUL 2026

NW-1, 11 JUN 2026 to 09 JUL 2026