

APP CRS 210°	Rwy Ldg Sfc Elev Apt Elev	N/A 430 N/A
------------------------	---------------------------------	--------------------------

COPTER RNAV (GPS) 210°

WEST 30TH ST (JRA)

<p>▼ DME/DME RNP-0.3 NA.</p> <p>▲ NA Radar required.</p> <p>Use Teterboro altimeter setting when not received use LaGuardia altimeter setting.</p>	<p>MISSED APPROACH: Climbing left turn to 2000 direct JEDIL and hold.</p>
--	---

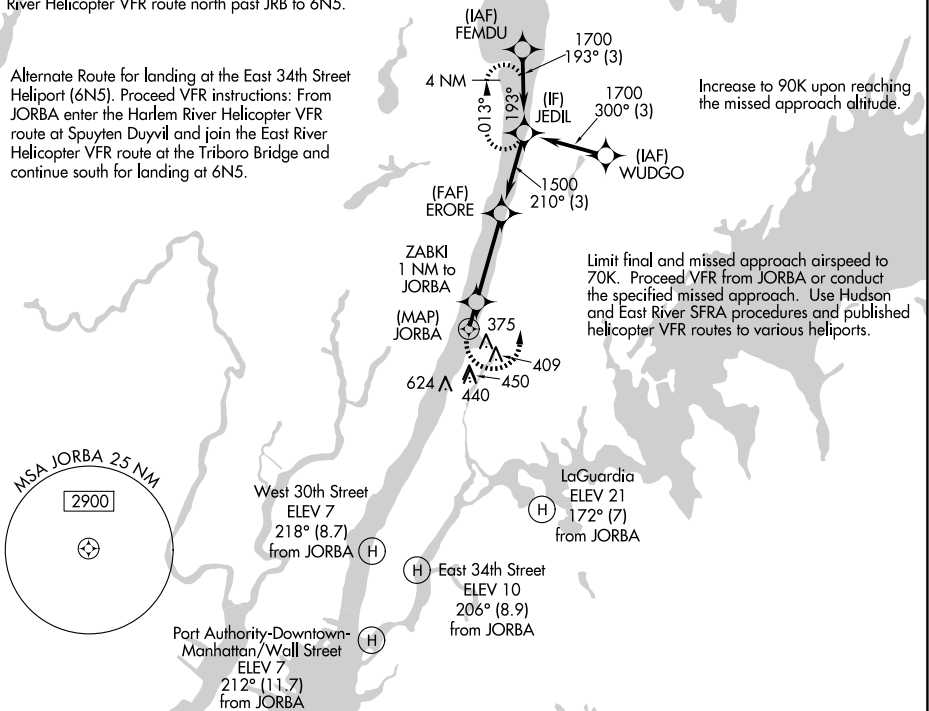
LA GUARDIA APP CON 126.05	NEWARK APP CON 127.85	UNICOM 123.050 (CTAF) 0
-------------------------------------	---------------------------------	-----------------------------------

Proceed VFR instructions: From JORBA enter Hudson River helicopter VFR route at Spuyten Duyvil and continue south for landing at West 30th Street Heliport (JRA). Continue south and join the East River helicopter VFR route at Battery Park for landing at Wall Street Heliport (JRB). For landing at the East 34th Street Heliport (6N5) continue following East River Helicopter VFR route north past JRB to 6N5.

Limit initial and intermediate approach to 90K.

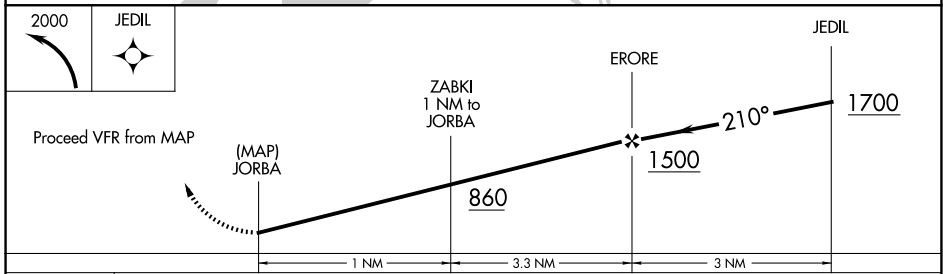
Alternate Route for landing at the East 34th Street Heliport (6N5). Proceed VFR instructions: From JORBA enter the Harlem River Helicopter VFR route at Spuyten Duyvil and join the East River Helicopter VFR route at the Triboro Bridge and continue south for landing at 6N5.

Increase to 90K upon reaching the missed approach altitude.



NE-2, 11 JUN 2026 to 09 JUL 2026

NE-2, 11 JUN 2026 to 09 JUL 2026



CATEGORY	COPTER
LNVA MDA	780-¾ 350 (400-¾)