

WAAS CH <b>90547</b> <b>W25A</b>	APP CRS <b>260°</b>	Rwy Ldg TDZE Apt Elev	<b>5305</b> <b>6141</b> <b>6179</b>
--	------------------------	-----------------------------	---

# RNAV (GPS) RWY 25

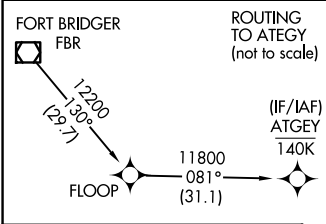
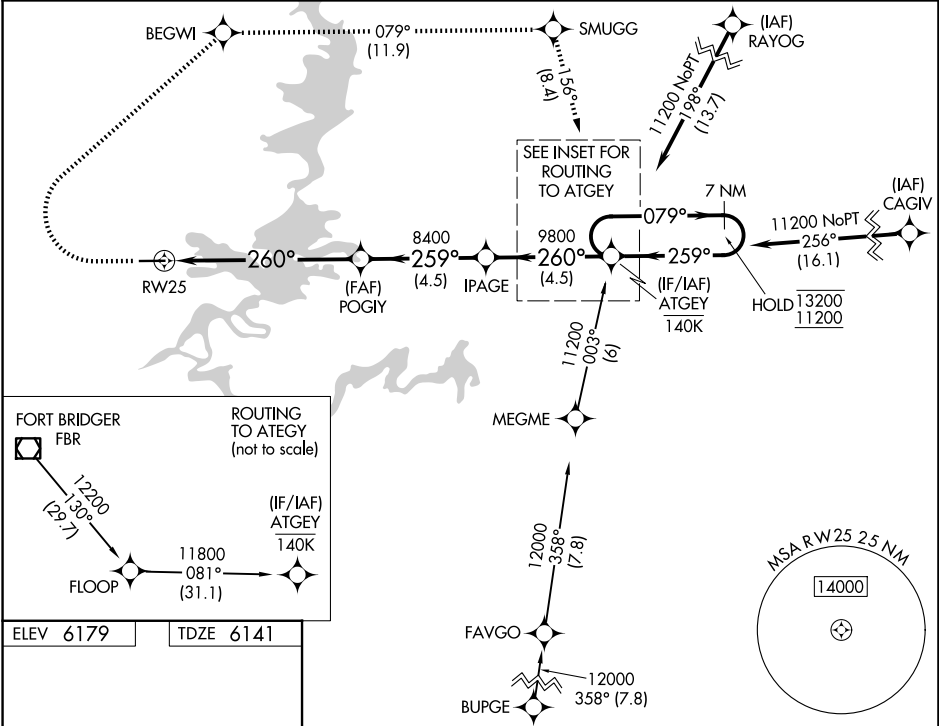
MANILA (40U)

RNP APCH - GPS.

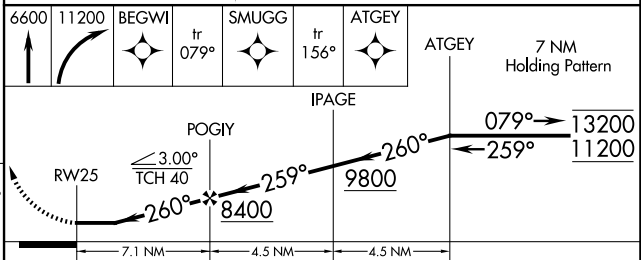
**⚠** Rwy 25 helicopter visibility reduction below 1 SM NA.  
Procedure NA at night. When local altimeter not received,  
procedure NA.

MISSED APPROACH: Climb to 6600 then climbing right turn to 11200 direct BEGWI and on track 079° to SMUGG and on track 156° to ATGEY and hold.

AWOS-3PT <b>119.25</b>	SALT LAKE CENTER <b>119.95 377.15</b>	UNICOM <b>122.8 (CTAF)</b>
---------------------------	--	-------------------------------



ELEV 6179	TDZE 6141
-----------	-----------



CATEGORY	A	B	C	D
LP MDA	6800-1	659 (700-1)		NA
LNAV MDA	6980-1 839 (900-1)	6980-1¼ 839 (900-1¼)		NA
CIRCLING	7120-1¼ 941 (1000-1¼)	7260-1½ 1081 (1100-1½)		NA

MIRL Rwy 7-25

# RNAV (GPS) RWY 25

SW-4, 11 JUN 2026 to 09 JUL 2026

SW-4, 11 JUN 2026 to 09 JUL 2026