

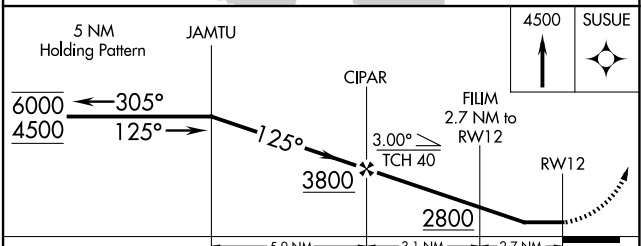
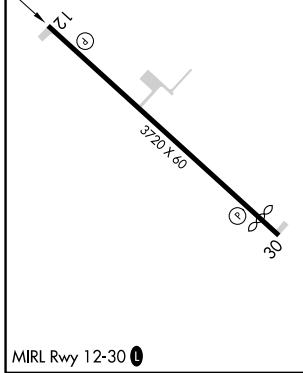
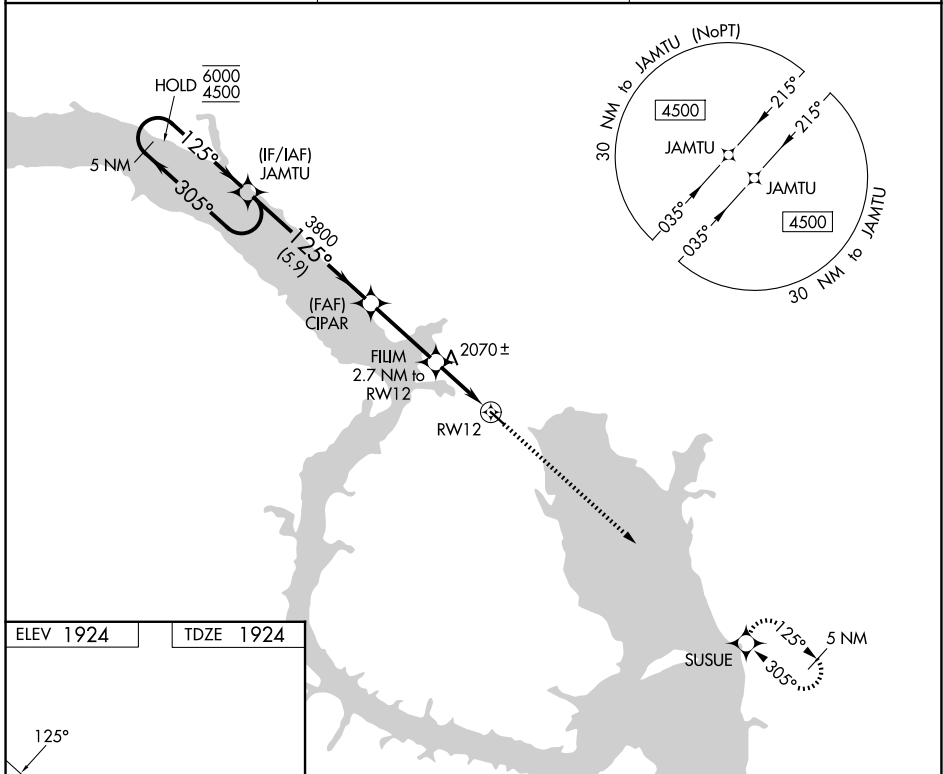
APP CRS	Rwy Ldg	<b>3720</b>
<b>125°</b>	TDZE	<b>1924</b>
	Apt Elev	<b>1924</b>

# RNAV (GPS) RWY 12

NEW TOWN MUNI (Ø5D)

RNP APCH - GPS.	MISSED APPROACH: Climb to 4500 direct SUSUE and hold.
▼ Use 08D altimeter setting; when not received, use D60 altimeter setting and increase all MDAs 40 feet. Increase LNAV Cat C visibility 1/8 SM. Rwy 12 helicopter visibility reduction below 3/4 SM NA. ▲ NA	

Ø8D AWOS-3 <b>121.1</b>	MINNEAPOLIS CENTER <b>127.6 279.6</b>	CTAF <b>122.9</b>
----------------------------	--	----------------------



CATEGORY	A	B	C	D
LNAV MDA	2420-1	496 (500-1)	2420-1 3/8 496 (500-1 3/8)	NA
CIRCLING	2500-1 576 (600-1)	2620-1 696 (700-1)	2760-2 1/2 836 (900-2 1/2)	NA

NC-1, 11 JUN 2026 to 09 JUL 2026

NC-1, 11 JUN 2026 to 09 JUL 2026