

APP CRS	Rwy Ldg	4200
126°	TDZE	2249
	Apt Elev	2249

RNAV (GPS) RWY 13

DUNN COUNTY WEYDAHL FLD (9Y1)

RNP APCH.

▽ Use Watford City altimeter setting, when not received, use Dickinson altimeter setting; increase all MDA's 40 feet and Cat C visibility 1/8 SM. Increase Circling visibility Cat C 1/4 SM.

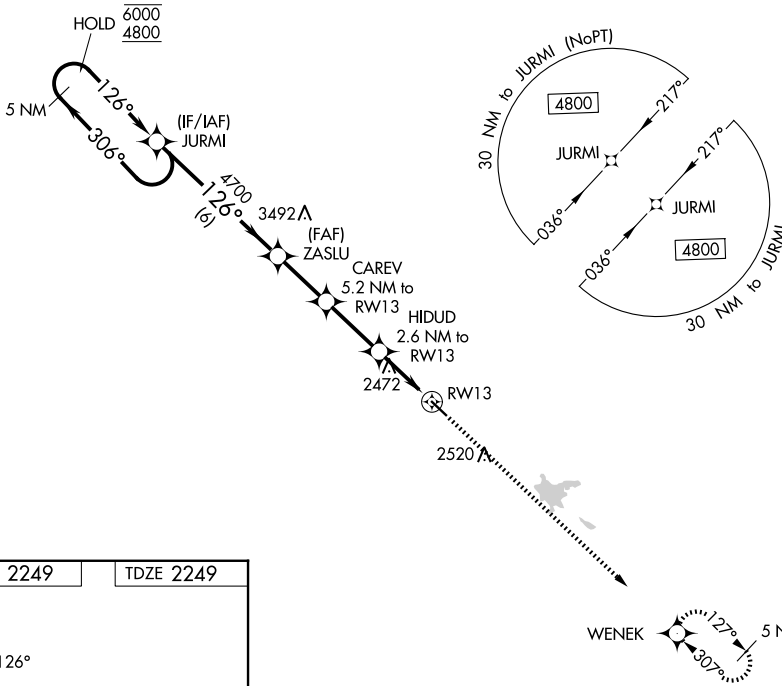
▲ NA

MISSED APPROACH: Climb to 4800 direct WENЕК and hold.

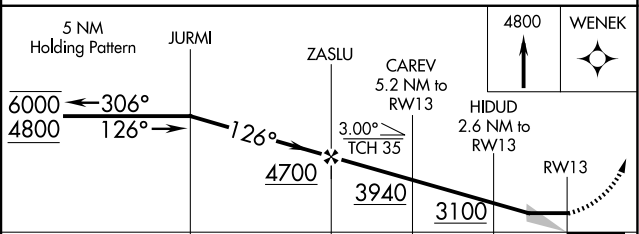
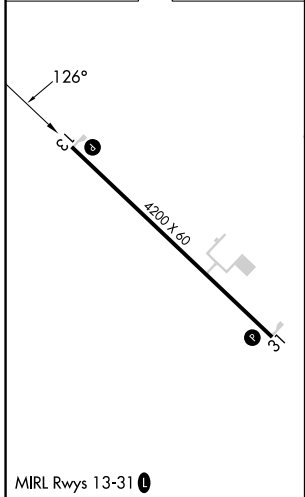
AWOS-3PT
118.525

MINNEAPOLIS CENTER
124.25 236.825

CTAF
122.90



ELEV 2249	TDZE 2249
-----------	-----------



CATEGORY	A	B	C	D
LNAV MDA	2820-1	571 (600-1)	2820-1½ 571 (600-1½)	NA
CIRCLING	2880-1 631 (700-1)	2900-1 651 (700-1)	2960-2 711 (800-2)	NA

NC-1, 11 JUN 2026 to 09 JUL 2026

NC-1, 11 JUN 2026 to 09 JUL 2026