

WAAS CH 90442 W10A	APP CRS 101°	Rwy Ldg TDZE Apt Elev	4000 728 732
--	------------------------	-----------------------------	---

RNAV (GPS) RWY 10

BRECKINRIDGE COUNTY (I93)

RNP APCH.

▽ Rwy 10 helicopter visibility reduction below 3/4 SM NA.
△ NA Baro-VNAV NA. Use Fort Knox altimeter setting, when not received, use Elizabethtown altimeter setting and increase LPV DA to 1043, LNAV/VNAV DA to 1191 and all MDA 20 feet.

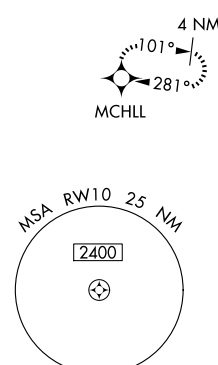
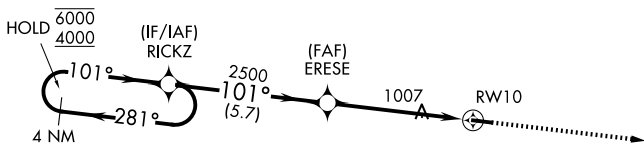
MISSED APPROACH: Climb to 4000 direct MCHLL and hold, continue climb-in-hold to 4000.

AWOS-3PT
123.625

KFTK ATIS ★
109.6

LOUISVILLE APP CON
123.675 327.0

CTAF
122.9 0

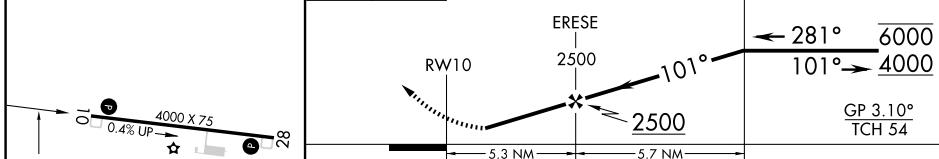


SE-1, 11 JUN 2026 to 09 JUL 2026

SE-1, 11 JUN 2026 to 09 JUL 2026

ELEV 732	TDZE 728
----------	----------

4000 MCHLL VGSI and RNAV glidepath not coincident (VGSI Angle 3.10/TCH 34).
 4 NM Holding Pattern



CATEGORY	A	B	C	D
LPV DA		1036-1	308 (400-1)	
LNAV/VNAV DA		1184-1 3/8	456 (500-1 3/8)	
LNAV MDA	1380-1	652 (700-1)	1380-1 7/8	652 (700-1 7/8)
CIRCLING	1380-1 648 (700-1)	1480-1 748 (800-1)	1480-2 1/4 748 (800-2 1/4)	1480-2 1/2 748 (800-2 1/2)

MIRL Rwy 10-28 **0**
 REIL Rwy 10 and 28 **0**