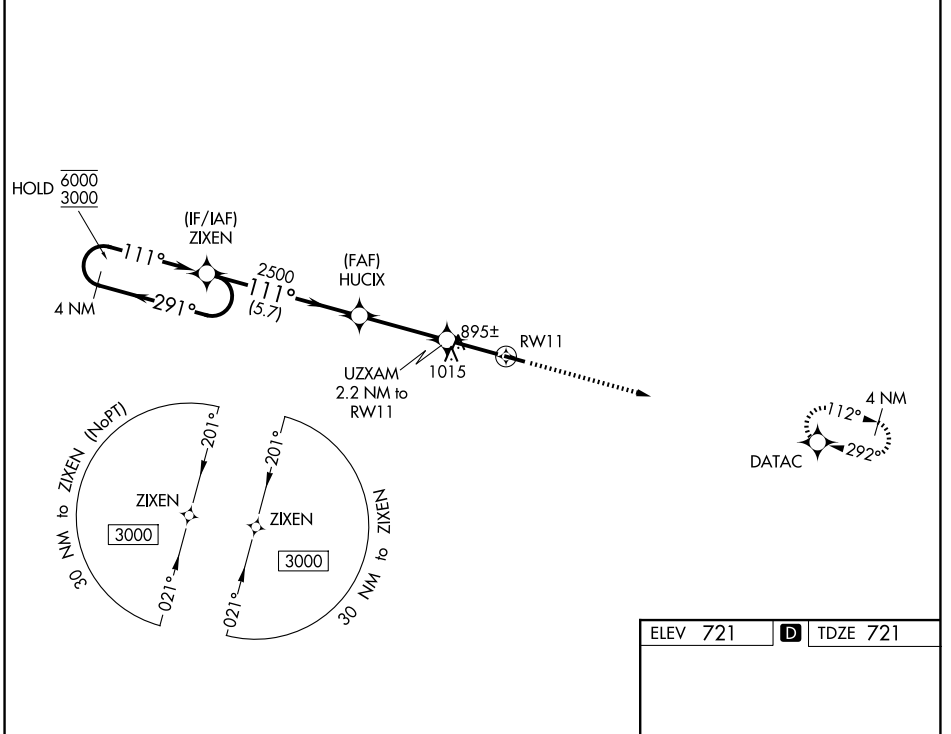


WAAS CH 62837 W11A	APP CRS 111°	Rwy Ldg TDZE 721 Apt Elev 721	3850
--	------------------------	---	-------------

RNAV (GPS) RWY 11

CYNTHIANA-HARRISON COUNTY (ØI8)

RNP APCH.		MISSED APPROACH: Climb to 3000 direct DATAC and hold.
27K AWOS-3 119.975	LEXINGTON APP CON 120.15 259.3 (040°-220°) 120.75 298.9 (221°-039°)	UNICOM 122.8 (CTAF) Ø



SE-1, 11 JUN 2026 to 09 JUL 2026

SE-1, 11 JUN 2026 to 09 JUL 2026

ELEV 721	D TDZE 721
----------	-------------------

The visual segment diagram shows the path from HUCIX to UZXAM and then to RW11. HUCIX is 2500 feet above the runway. UZXAM is 2.2 NM from RW11 and 1460 feet above the runway. RW11 is 1015 feet long. Obstacle symbols are shown along the path. A DATAC waypoint is also indicated.

CATEGORY	A	B	C	D
LP MDA	1220-1	499 (500-1)		NA
LNAV MDA	1300-1	579 (600-1)		NA
CIRCLING	1340-1 619 (700-1)	1560-1¼ 839 (900-1¼)		NA

MIRL Rwy 11-29 **Ø**
REIL Rws 11 and 29 **Ø**