

WAAS CH <b>72835</b> <b>W12A</b>	APP CRS <b>121°</b>	Rwy Ldg TDZE Apt Elev	<b>3802</b> <b>165</b> <b>166</b>
--	------------------------	-----------------------------	---

# RNAV (GPS) RWY 12

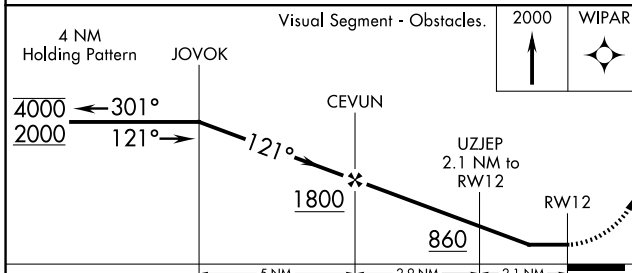
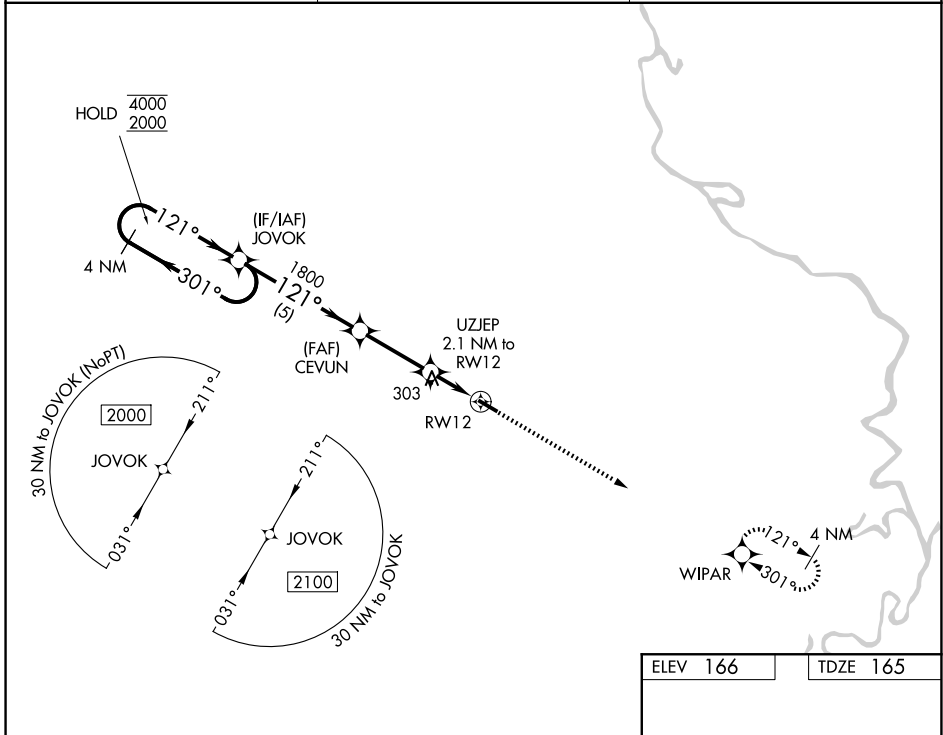
ROY WILCOX (5R.1)

RNP APCH.

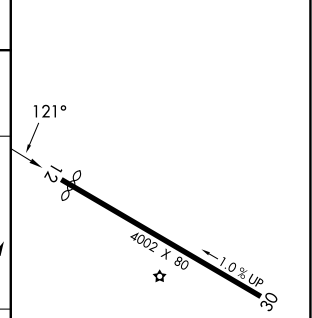
**NA** Procedure NA at night. Use Mobile Rgnl altimeter setting; when not received, use Hattiesburg Bobby L Chain Muni altimeter setting and increase all MDAs 20 feet; increase LNAV Cat C visibility  $\frac{1}{8}$  SM. Rwy 12 helicopter visibility reduction below 1 SM NA.

**MISSED APPROACH:**  
Climb to 2000 direct  
WIPAR and hold.

MOB ASOS <b>124.75 257.85</b>	HOUSTON CENTER <b>127.65 285.475</b>	UNICOM <b>122.8 (CTAF)</b>
----------------------------------	---	-------------------------------



ELEV 166	TDZE 165
----------	----------



CATEGORY	A	B	C	D
LP MDA	660-1	495 (500-1)	660-1 $\frac{3}{8}$ 495 (500-1 $\frac{3}{8}$ )	NA
LNAV MDA	680-1	515 (600-1)	680-1 $\frac{3}{8}$ 515 (600-1 $\frac{3}{8}$ )	NA
CIRCLING	740-1 574 (600-1)	760-1 594 (600-1)	940-2 $\frac{1}{4}$ 774 (800-2 $\frac{1}{4}$ )	NA

MIRL Rwy 12-30

SE-4, 11 JUN 2026 to 09 JUL 2026

SE-4, 11 JUN 2026 to 09 JUL 2026