

| | | | |
|--|------------------------|-----------------------------|---|
| WAAS CH 62840 W17A | APP CRS 171° | Rwy Ldg TDZE Apt Elev | 5943 693 693 |
|--|------------------------|-----------------------------|---|

RNAV (GPS) RWY 17

KENNETH COPELAND (4T2)

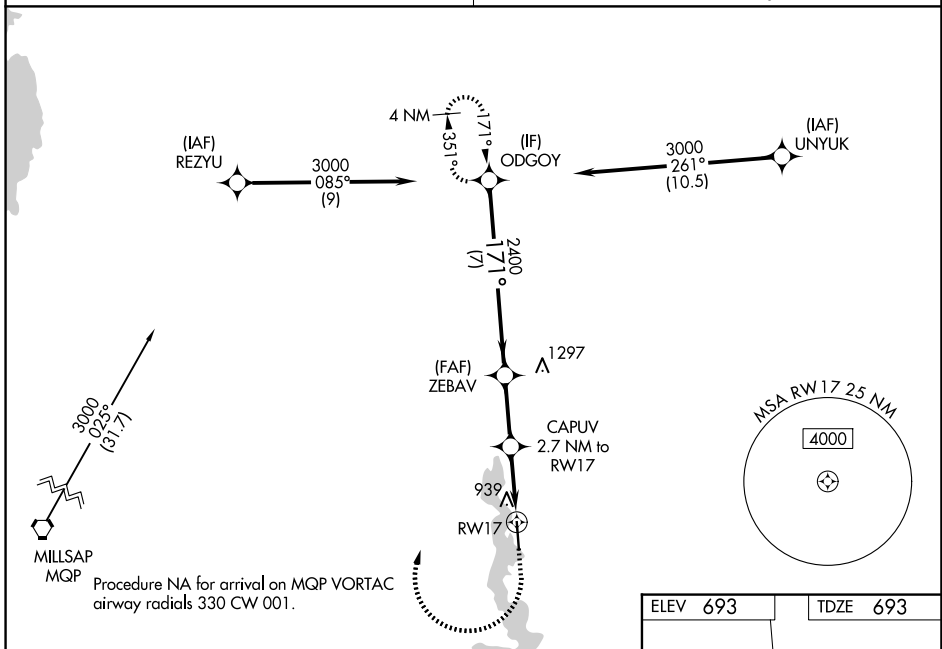
RNP APCH.

NA Baro-VNAV and VDP NA when using Fort Worth Meacham Intl altimeter setting. Rwy 17 helicopter visibility reduction below $\frac{3}{4}$ SM NA. For uncompensated Baro-VNAV systems, LNAV/VNAV NA below -16°C or above 54°C. Obtain local altimeter setting on CTAF; when not received, use Fort Worth Meacham Intl altimeter setting; Increase LPV DA to 973 feet; increase LNAV/VNAV DA to 1135 feet; increase all MDA 40 feet and LNAV Cat C/D and Circling Cat C visibility $\frac{1}{4}$ SM.

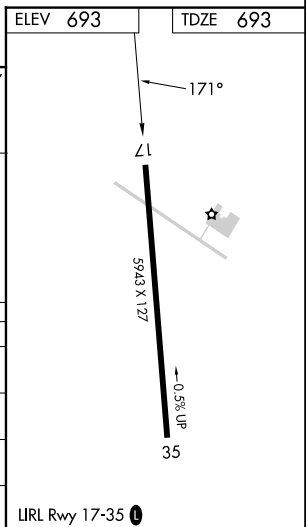
MISSED APPROACH: Climb to 1200 then climbing right turn to 3100 direct ODGOY and hold.

LONE STAR APP CON
125.8 257.95

UNICOM
123.075 (CTAF)



| | | | | |
|--------------------|---|---|---|--------|
| | ODGOY | ZEBAV | CAPUV | RW17 |
| | 3000 | 2400 | 2400 | 939 |
| | 171° | | 171° | |
| | 7 NM | 2.6 NM | 1.2 NM | 1.5 NM |
| GP 3.00° TCH 40 | | | | |
| CATEGORY | A | B | C | D |
| LPV DA | 943-1 250 (300-1) | | | |
| LNAV/VNAV DA | 1105-1 $\frac{3}{8}$ 412 (500-1 $\frac{3}{8}$) | | | |
| LNAV MDA | 1200-1 507 (600-1) | 1200-1 $\frac{3}{8}$ 507 (600-1 $\frac{3}{8}$) | | |
| CIRCLING | 1240-1 547 (600-1) | 1340-1 $\frac{3}{4}$ 647 (700-1 $\frac{3}{4}$) | 1440-2 $\frac{1}{2}$ 747 (800-2 $\frac{1}{2}$) | |



SC-2, 11 JUN 2026 to 09 JUL 2026

SC-2, 11 JUN 2026 to 09 JUL 2026