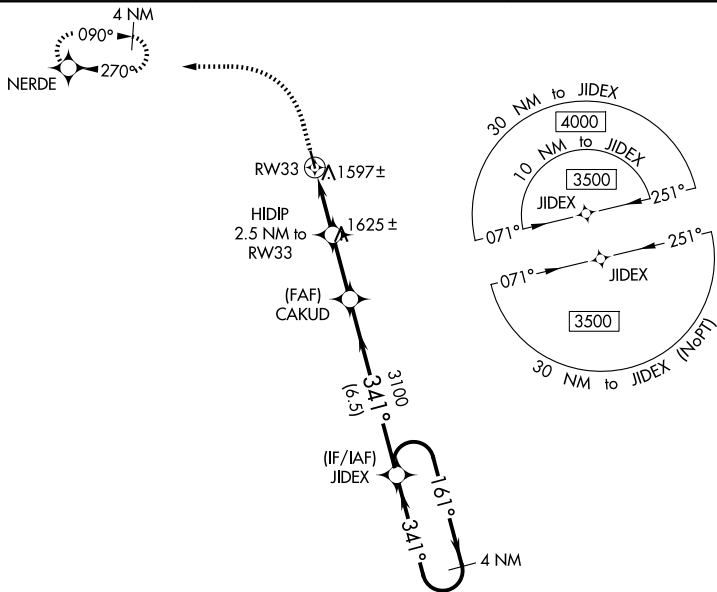


WAAS CH <b>53540</b> <b>W33A</b>	APP CRS <b>341°</b>	Rwy Ldg <b>3500</b> TDZE <b>1511</b> Apt Elev <b>1511</b>
--	------------------------	---

# RNAV (GPS) RWY 33

LAKOTA MUNI (5L $\emptyset$ )

RNP APCH - GPS.	MISSED APPROACH: Climb to 2300 then climbing left turn to 3300 direct NERDE and hold.	
<p><b>▼</b> Baro-VNAV NA. Rwy 33 helicopter visibility reduction below 3/4 SM NA.</p> <p><b>▲</b> NA Circling Rwy 15 NA at night. Use Devils Lake altimeter setting.</p>		
DVL AWOS-3PT <b>125.875</b>	MINNEAPOLIS CENTER <b>132.15 269.6</b>	UNICOM <b>122.8 (CTAF) <math>\emptyset</math></b>



ELEV 1511	TDZE 1511	R-5403			
2300	3300	NERDE	VGSI and RNAV glidepath not coincident (VGSI Angle 3.00/TCH 26).		
		CAKUD	JIDEX	4 NM Holding Pattern	
		HIDIP 2.5 NM to RW33	3100	3100	3500
		2340	3100	GP 3.00° TCH 40	
		2.5 NM	2.4 NM	6.5 NM	
CATEGORY	A	B	C	D	
LPV DA	1827-1 1/8		316 (400-1 1/8)		NA
LNAV/VNAV DA	1827-1 1/8		316 (400-1 1/8)		NA
LNAV MDA	1920-1		409 (500-1)		1920-1 1/8 409 (500-1 1/8)
CIRCLING	2080-1 569 (600-1)	2200-1 689 (700-1)	2320-2 1/4 809 (900-2 1/4)		NA

NC-1, 11 JUN 2026 to 09 JUL 2026

NC-1, 11 JUN 2026 to 09 JUL 2026