

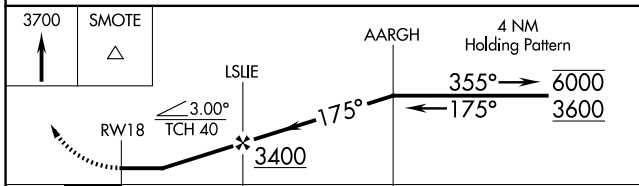
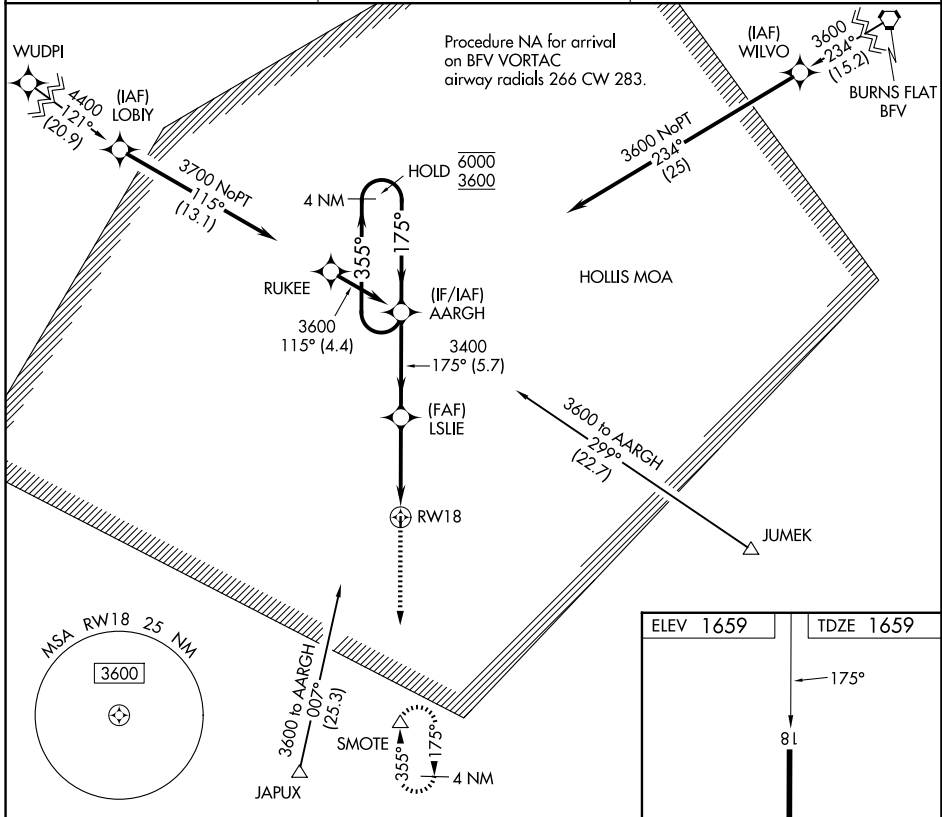
APP CRS	Rwy Ldg	3000
175°	TDZE	1659
	Apt Elev	1659

RNAV (GPS) RWY 18

HOLLIS MUNI (O35)

RNP APCH.	<p>▼ Rwy 18 helicopter visibility reduction below 1 SM NA. ▲ Straight-in Rwy 18 and Circling Rwy 18 NA at night. Use Altus/Quartz Mountain Rgnl altimeter setting.</p>	<p>MISSED APPROACH: Climb to 3700 direct SMOTE and hold.</p>

AXS AWOS-3PT	ALTUS APP CON *	CTAF
118.825	125.1 353.7	122.9



ELEV 1659	TDZE 1659
<p>MIRL Rwy 18-36</p>	

CATEGORY	A	B	C	D
LNVA MDA	2400-1 741 (800-1)	2400-1¼ 741 (800-1¼)	NA	
CIRCLING	2400-1 741 (800-1)	2480-1¼ 821 (900-1¼)	NA	

SC-1, 11 JUN 2026 to 09 JUL 2026

SC-1, 11 JUN 2026 to 09 JUL 2026