

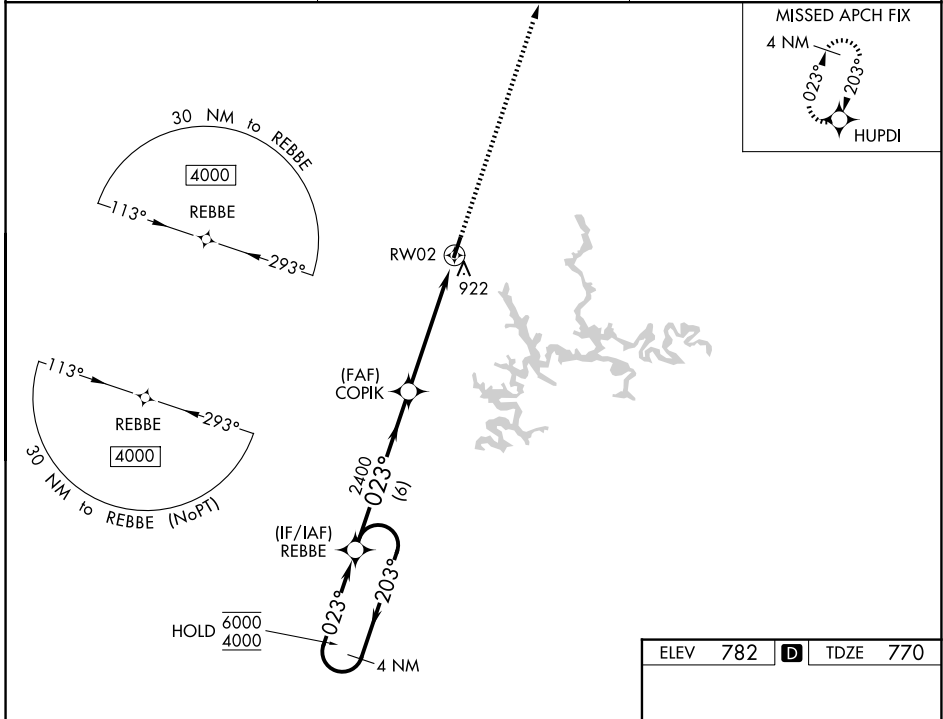
WAAS CH **69542** APP CRS **023°** Rwy Ldg **3800**
 TDZE **770**
 Apt Elev **782**

RNAV (GPS) RWY 2
 LEITCHFIELD-GRAYSON COUNTY (M20)

RNP APCH. MISSED APPROACH: Climb to 4000 direct HUPDI and hold, continue climb-in-hold to 4000.

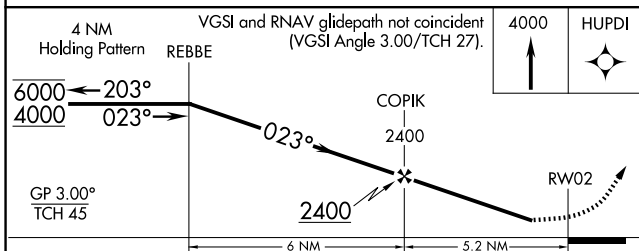
NA Circling Rwy 20 NA at night. Rwy 2 helicopter visibility reduction below 3/4 SM NA. Baro-VNAV NA. Use Elizabethtown altimeter setting.

EKX AWOS-3 **118.55** INDIANAPOLIS CENTER **121.175 353.65** UNICOM **123.0 (CTAF) 0**



SE-1, 11 JUN 2026 to 09 JUL 2026

SE-1, 11 JUN 2026 to 09 JUL 2026



ELEV **782** TDZE **770**

CATEGORY	A	B	C	D
LPV DA	1140-1	370 (400-1)		NA
LNAV/VNAV DA	1308-1½	538 (600-1½)		NA
LNAV MDA	1240-1	470 (500-1)	1240-1¾ 470 (500-1¾)	NA
CIRCLING	1380-1	598 (600-1)	1380-1½ 598 (600-1½)	NA

