

WAAS CH <b>61036</b> <b>W17A</b>	APP CRS <b>175°</b>	Rwy Ldg TDZE <b>1731</b> Apt Elev <b>1733</b>
--	------------------------	---

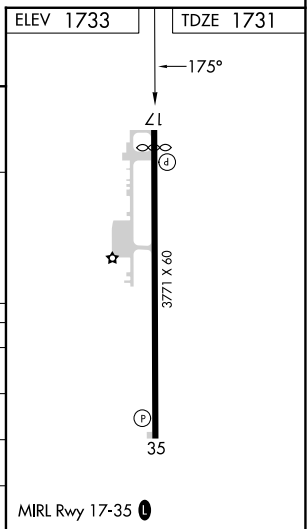
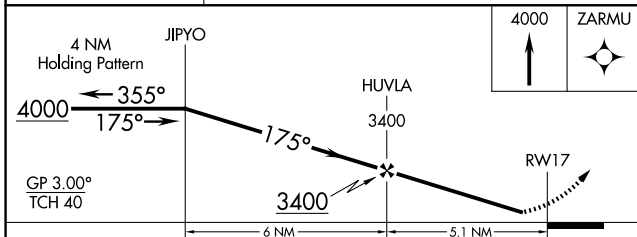
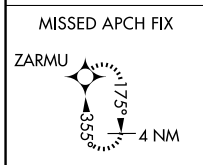
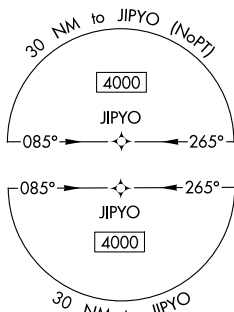
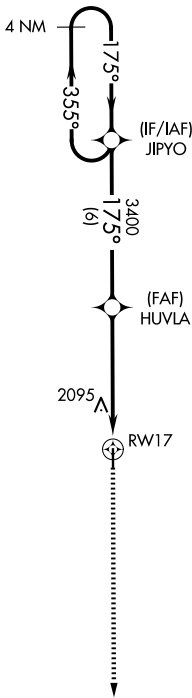
# RNAV (GPS) RWY 17

THOMAS MUNI (104)

Baro-VNAV NA. Use Weatherford altimeter setting; when not received, use Clinton Rgnl altimeter setting. DME/DME RNP-0.3 NA. Night landing: Rwy 17 operational VGSI required, remain on or above VGSI glidepath until threshold. Helicopter visibility reduction below 1 SM NA.

MISSED APPROACH: Climb to 4000 direct ZARMU and hold.

OJA AWOS-3 <b>118.575</b>	FORT WORTH CENTER <b>128.4 269.37</b>	CTAF <b>122.9 0</b>
------------------------------	--	------------------------



CATEGORY	A	B	C	D
LPV DA	2033-1	302 (300-1)		NA
LNAV/VNAV DA	2480-3	749 (800-3)		NA
LNAV MDA	2400-1	669 (700-1)		NA
CIRCLING	2400-1 667 (700-1)	2460-1 727 (800-1)		NA

SC-1, 11 JUN 2026 to 09 JUL 2026

SC-1, 11 JUN 2026 to 09 JUL 2026