

APP CRS	Rwy Ldg	N/A
142°	TDZE	N/A
	Apt Elev	4126

# RNAV (GPS)-A

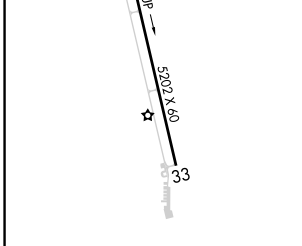
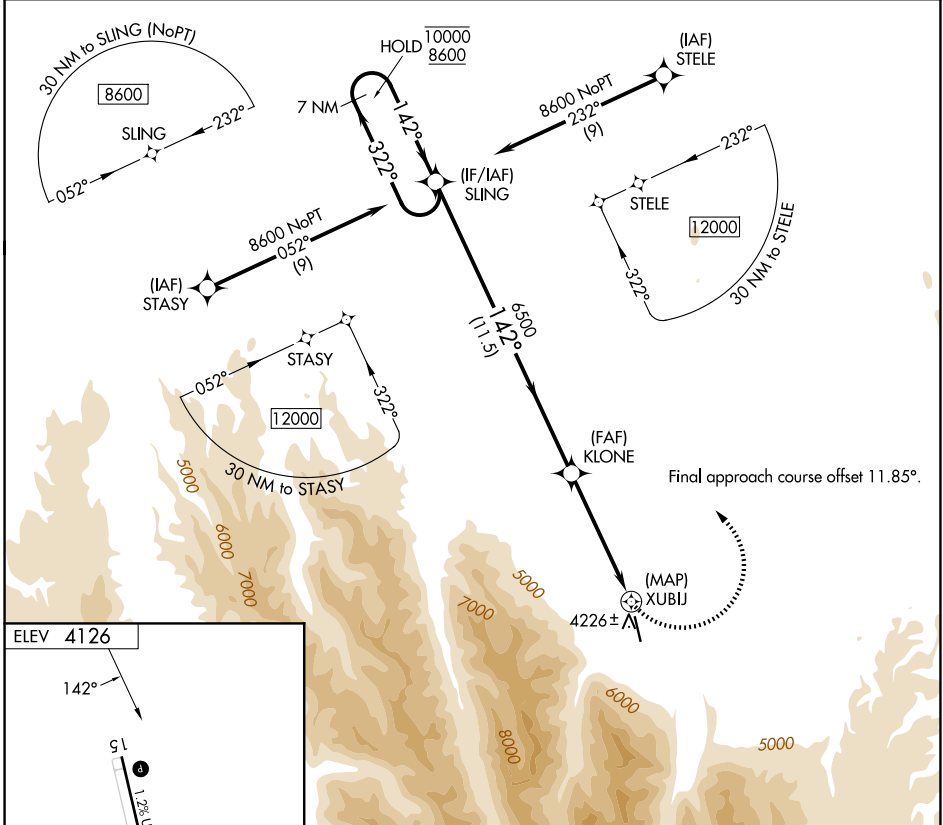
JOSEPH STATE (JSY)

RNP APCH - GPS.

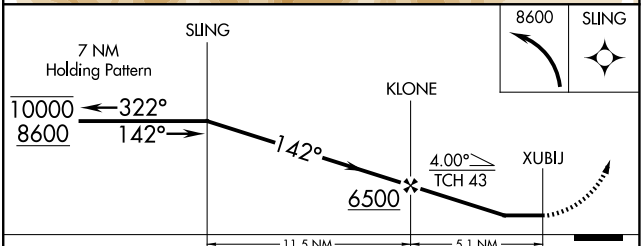
**▼** Circling NA southwest of Rwy 15-33.  
**▲** Procedure NA at night.  
 Rwy 15 and 33 helicopter visibility reduction below 1 SM NA.

MISSED APPROACH: Climbing left turn to 8600 direct SLING and hold, continue climb-in-hold to 8600.

AWOS-3P <b>123.775</b>	SEATTLE CENTER <b>123.95 290.55</b>	UNICOM <b>122.8 (CTAF) 0</b>
---------------------------	----------------------------------------	---------------------------------



ELEV	4126
REIL Rwy 15	0
MIRL Rwy 15-33	0



CATEGORY	A	B	C	D
CIRCLING	5000-1¼ 874 (900-1¼)	5480-1½ 1354 (1400-1½)	NA	

NW-1, 11 JUN 2026 to 09 JUL 2026

NW-1, 11 JUN 2026 to 09 JUL 2026