

APP CRS <b>116°</b>	Rwy Ldg <b>4200</b>
	TDZE <b>4325</b>
	Apt Elev <b>4328</b>

# RNAV (GPS) RWY 12

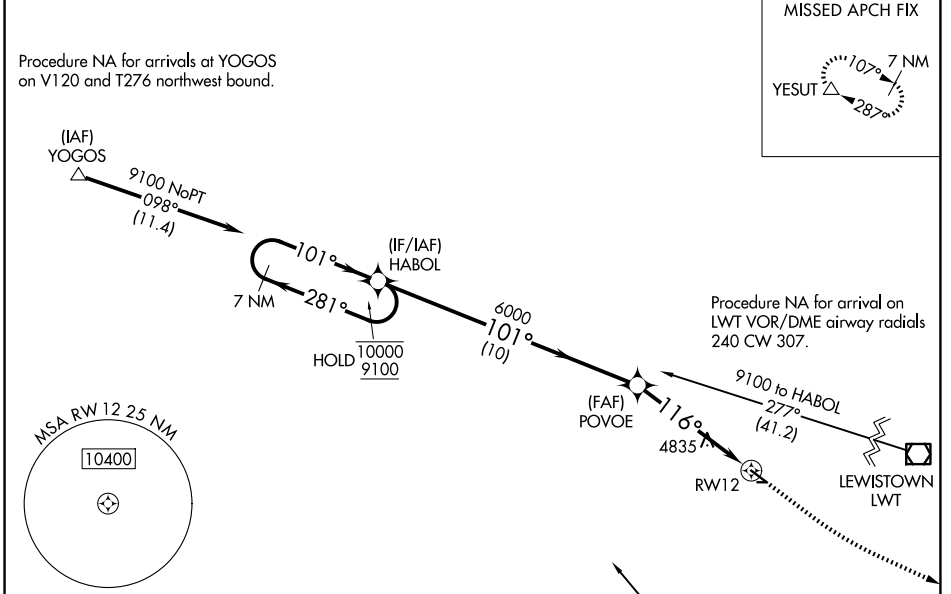
STANFORD/BIGGERSTAFF FLD (S64)

RNP APCH - GPS.

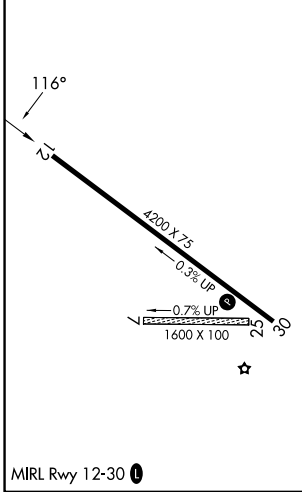
**NA** Rwy 12 helicopter visibility reduction below 3/4 SM NA. Circling NA to Rwy 7 and 25. Use LWT altimeter setting; when not received, use 19MT altimeter setting and increase all MDAs 60 feet and LNAV visibility Cat A 1/4 SM, and Circling visibility Cat B 1/4 SM. Procedure NA at night.

MISSED APPROACH: Climb to 5200 then climbing left turn to 8000 direct YESUT and hold.

LWT ASOS <b>118.375</b>	SALT LAKE CENTER <b>133.4 285.4</b>	UNICOM <b>122.8 (CTAF) 0</b>
----------------------------	--	---------------------------------



ELEV 4328	TDZE 4325
-----------	-----------



Procedure NA for arrivals at ZERZO on V187 and T317 southeast bound.

7 NM Holding Pattern	HABOL	POVOE	5200	8000	YESUT
10000 9100	281° 101°	101°	3.00° TCH 55		
		6000	RWY 12		
		10 NM	5.1 NM		

CATEGORY	A	B	C	D
LNAV MDA	5200-1 875 (900-1)	5200-1 1/4 875 (900-1 1/4)	5200-2 1/2	875 (900-2 1/2)
CIRCLING	5200-1 1/4 872 (900-1 1/4)	5240-1 1/4 912 (1000-1 1/4)	5600-3 1272 (1800-3)	5880-3 1552 (1600-3)

NW-1, 11 JUN 2026 to 09 JUL 2026

NW-1, 11 JUN 2026 to 09 JUL 2026