

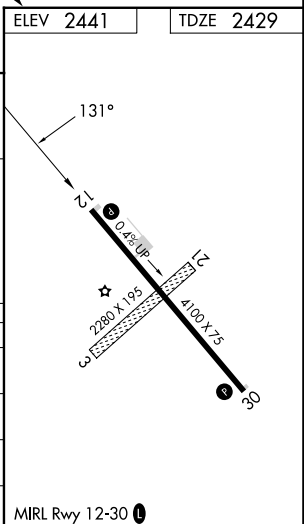
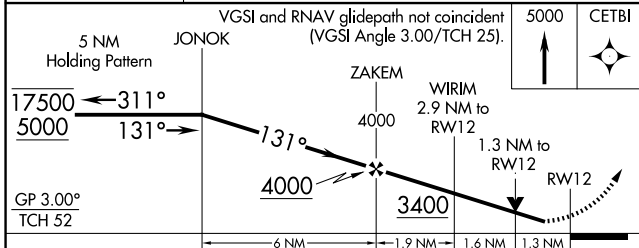
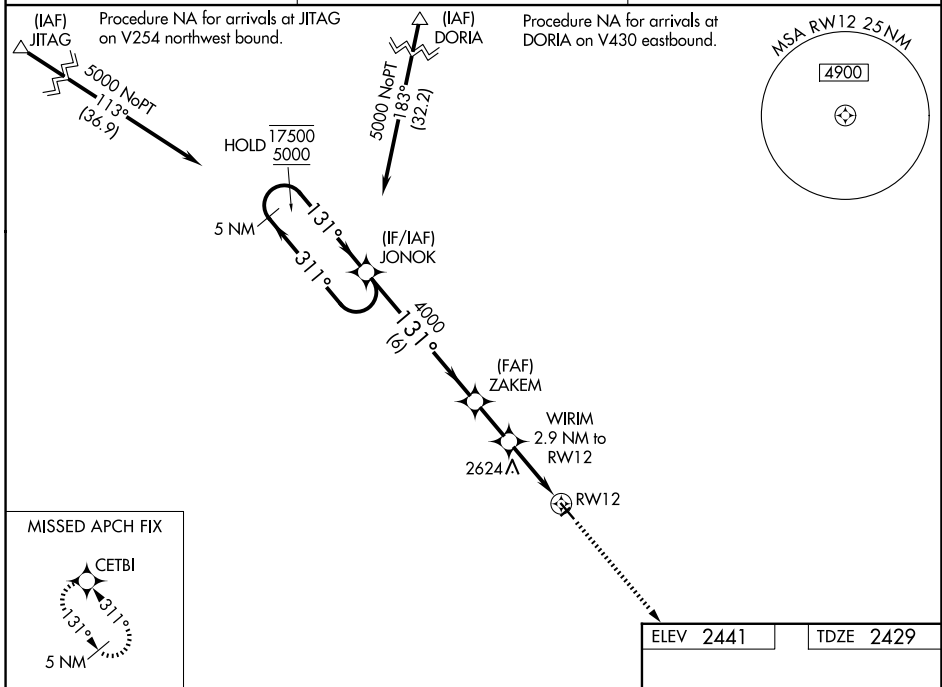
WAAS CH <b>86930</b> <b>W12A</b>	APP CRS <b>131°</b>	Rwy Ldg TDZE Apt Elev	<b>4100</b> <b>2429</b> <b>2441</b>
--	------------------------	-----------------------------	---

# RNAV (GPS) RWY 12

CIRCLE TOWN COUNTY (4U6)

RNP APCH-GPS.	<p>▼ Rwy 12 helicopter visibility reduction below 3/4 SM NA. For uncompensated Baro-VNAV systems, LNAV/VNAV NA below -19°C or above 54°C. Circling NA to Rwy's 3 and 21.</p>	MISSED APPROACH: Climb to 5000 direct CETBI and hold.
---------------	--	---

AWOS-2 <b>119.025</b>	SALT LAKE CENTER <b>126.85 305.2</b>	UNICOM <b>122.8 (CTAF) 0</b>
--------------------------	---	---------------------------------



CATEGORY	A	B	C	D
LPV DA	2679-1		250 (300-1)	
LNAV/VNAV DA	2850-1 1/4		421 (500-1 1/4)	
LNAV MDA	2880-1 451 (500-1)		2880-1 3/8 451 (500-1 3/8)	
CIRCLING	2940-1 499 (500-1)	3020-1 579 (600-1)	3060-1 3/4 619 (700-1 3/4)	3320-2 3/4 879 (900-2 3/4)

NW-1, 11 JUN 2026 to 09 JUL 2026

NW-1, 11 JUN 2026 to 09 JUL 2026