

APP CRS <b>326</b>	Rwy Ldg TDZE Apt Elev	<b>N/A</b> <b>N/A</b> <b>5076</b>
-----------------------	-----------------------------	---

# RNAV (GPS)-A

CHALLIS (LLJ)

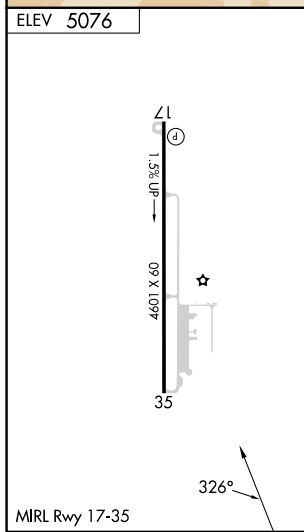
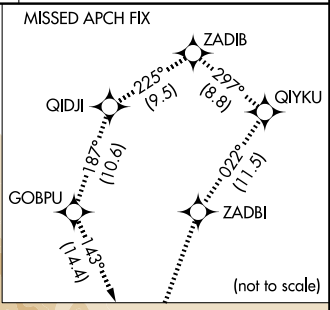
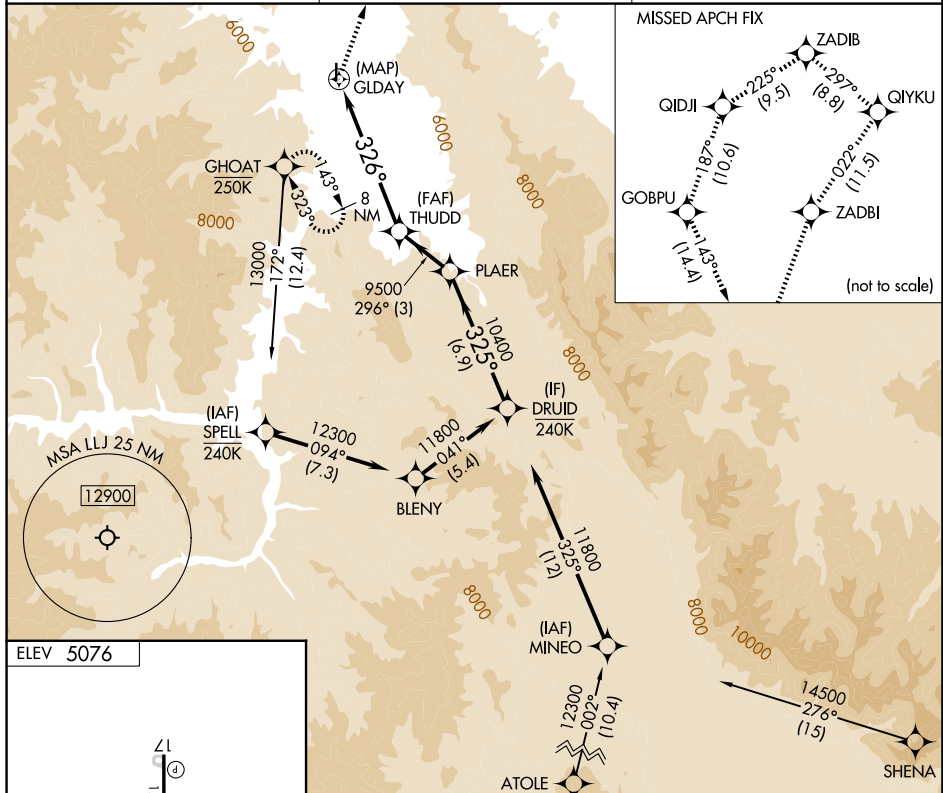
RNP APCH - GPS.

**▼** Rwy 17 and 35 helicopter visibility reduction below 1 SM NA.

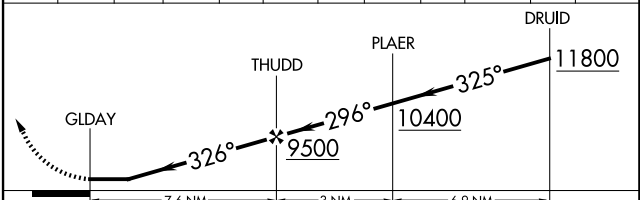
**▲** NA Procedure NA at night. Circling NA west of Rwy 17-35.

MISSED APPROACH: Climb to 14000 on the RNAV missed approach route to GHOAT and hold.

ASOS <b>119.275</b>	SALT LAKE CENTER <b>132.4 338.3</b>	UNICOM <b>122.8 (CTAF)</b>
------------------------	--	-------------------------------



14000	ZADBI	QIYKU	ZADIB	QIDJI	GOBPU	GHOAT
↑	tr 022°	tr 297°	tr 225°	tr 187°	tr 143°	



CATEGORY	A	B	C	D
CIRCLING	6680-1¼ 1604 (1700-1¼)	6680-1½ 1604 (1700-1½)	6840-3 1764 (1800-3)	7880-3 2804 (2900-3)

NW-1, 11 JUN 2026 to 09 JUL 2026

NW-1, 11 JUN 2026 to 09 JUL 2026