

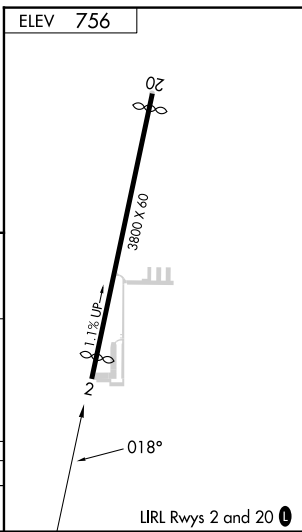
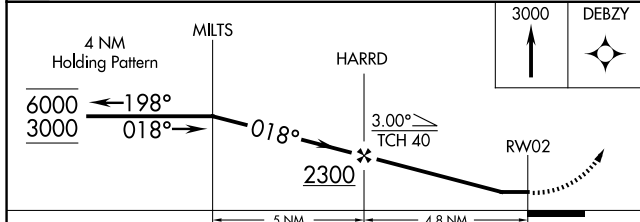
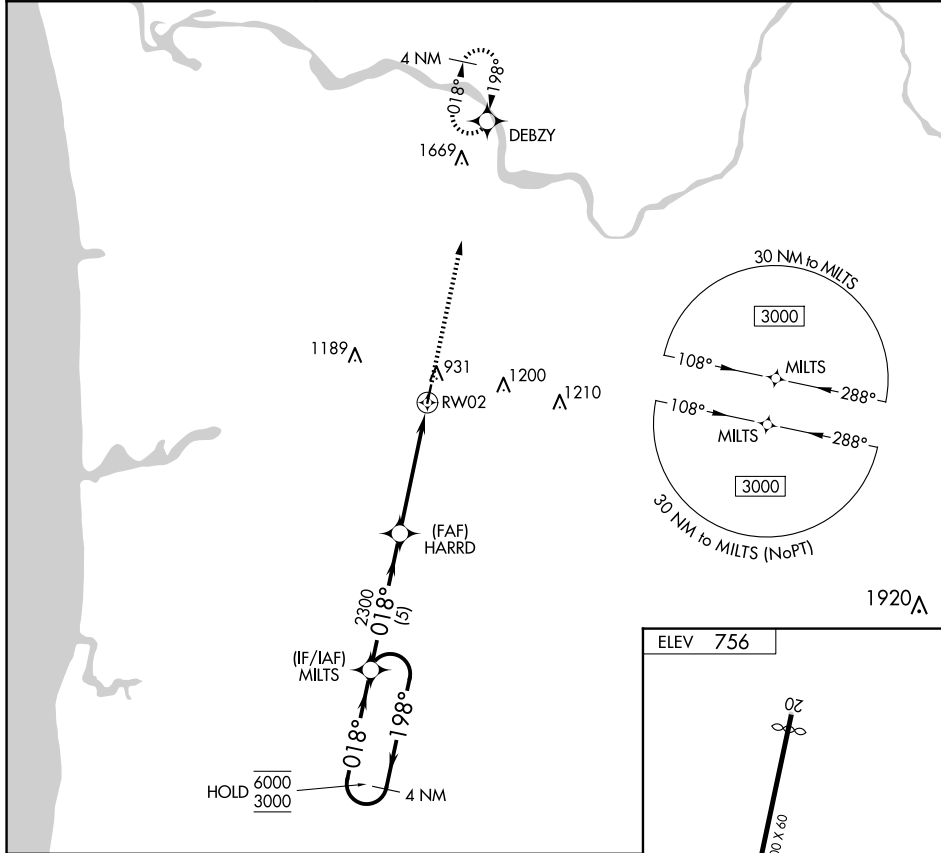
APP CRS <b>018°</b>	Rwy Idg TDZE Apt Elev	<b>N/A</b> <b>N/A</b> <b>756</b>
------------------------	-----------------------------	--

# RNAV (GPS)-A

OTTAWA EXEC (Z98)

RNP APCH - GPS.		MISSED APPROACH: Climb to 3000 direct DEBZY and hold.
<b>NA</b>	Procedure NA at night. Circling NA west of Rwy 2-20. Rwy 2 and 20 helicopter visibility reduction below 1 SM NA. Use BIV altimeter setting.	

BIV ASOS-3 <b>119.025</b>	GREAT LAKES APP CON <b>128.4 257.6</b>	CTAF <b>122.90</b>
------------------------------	---	-----------------------



CATEGORY	A	B	C	D
CIRCLING	1320-1 564 (600-2)	1380-1 624 (700-1)	NA	

EC-1, 11 JUN 2026 to 09 JUL 2026

EC-1, 11 JUN 2026 to 09 JUL 2026