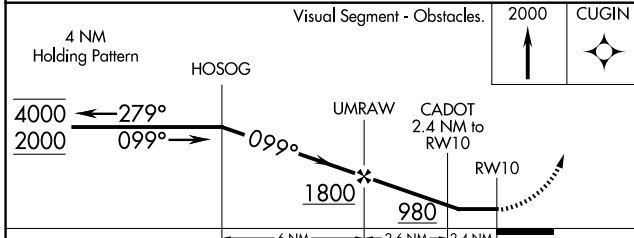
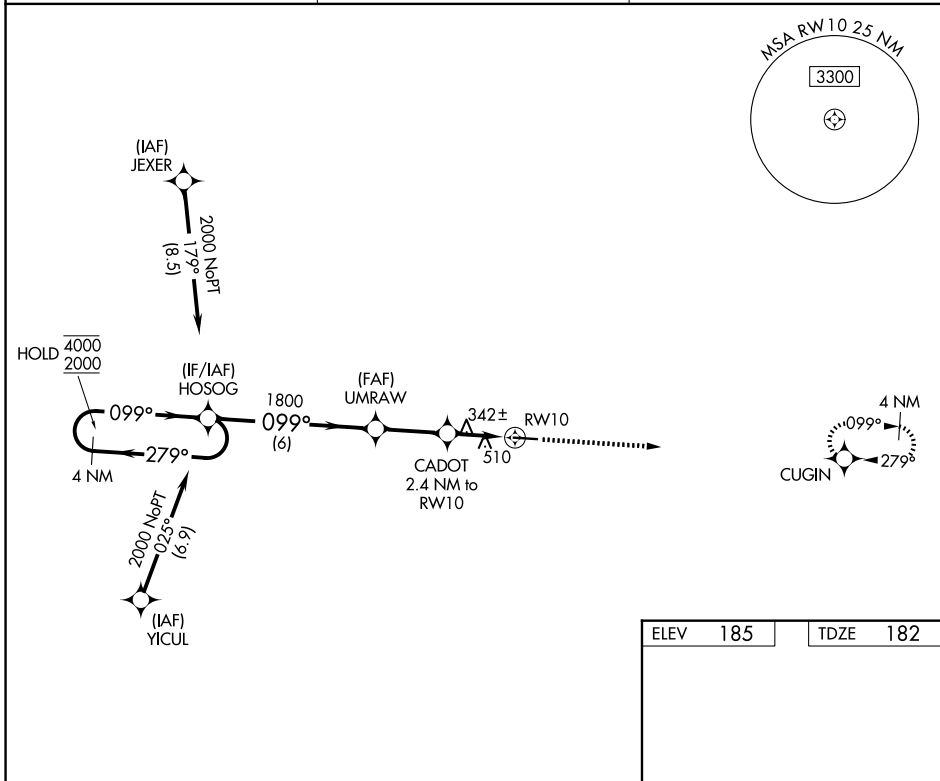


WAAS CH 42734 W10A	APP CRS 099°	Rwy Ldg TDZE Apt Elev	4760 182 185
--	------------------------	-----------------------------	---

RNAV (GPS) RWY 10

QUITMAN BROOKS COUNTY (4J5)

RNP APCH - GPS.		MISSED APPROACH: Climb to 2000 direct CUGIN and hold.
<p>▼ Rwy 10 helicopter visibility reduction below 1 SM NA. Procedure NA at night. Use VLD altimeter setting; when not received, use TVI altimeter setting and increase all MDAs 20 feet and LNAV Cat C visibility 1/8 SM.</p> <p>▲ NA</p>		
VLD ASOS 126.225	VALDOSTA APP CON★ 126.6	CTAF 122.9 0



ELEV 185	TDZE 182
MIRL Rwy 10-28 0	

CATEGORY	A	B	C	D
LP MDA	640-1	458 (500-1)	640-1 ³ / ₈ 458 (500-1 ³ / ₈)	NA
LNAV MDA	820-1	638 (700-1)	820-1 ³ / ₄ 638 (700-1 ³ / ₄)	NA

SE-4, 11 JUN 2026 to 09 JUL 2026

SE-4, 11 JUN 2026 to 09 JUL 2026