

WAAS CH <b>61338</b> <b>W12A</b>	APP CRS <b>125°</b>	Rwy Ldg TDZE Apt Elev	<b>4200</b> <b>2756</b> <b>2756</b>
--	------------------------	-----------------------------	---

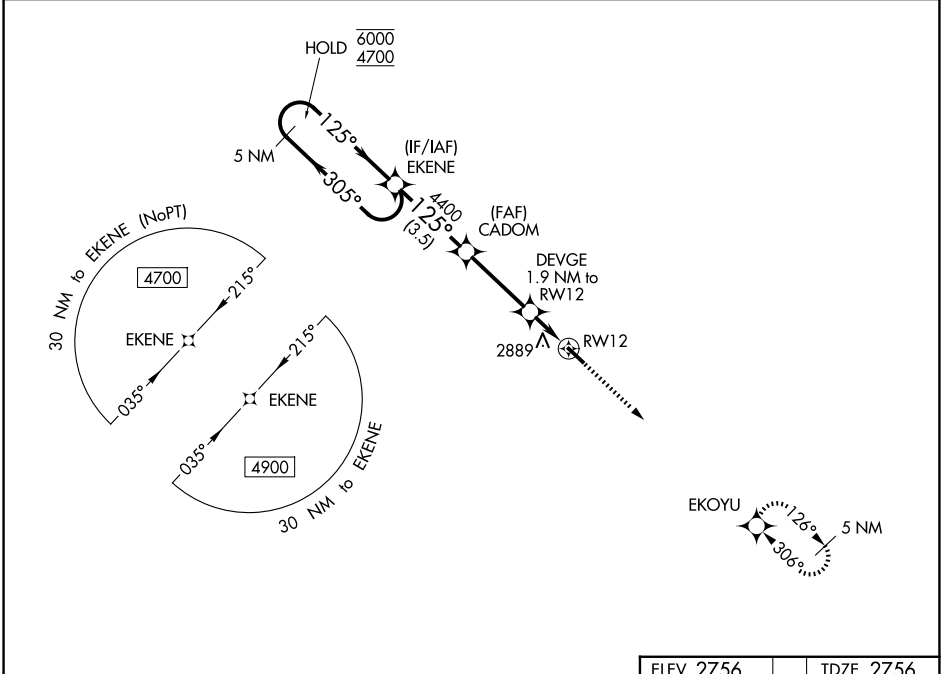
# RNAV (GPS) RWY 12

BEACH (20U)

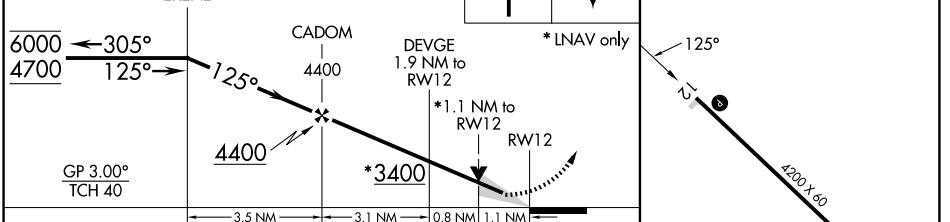
RNP APCH. MISSED APPROACH: Climb to 5000 direct EKOYU and hold.

▼ For uncompensated Baro-VNAV systems, LNAV/VNAV NA below -20°C or above 54°C.

AWOS-3 <b>118.175</b>	SALT LAKE CENTER <b>126.85 305.2</b>	UNICOM <b>122.8 (CTAF) 0</b>
--------------------------	---	---------------------------------



5 NM Holding Pattern VGSI and RNAV glidepath not coincident (VGSI Angle 3.00/TCH 26). ELEV 2756 TDZE 2756



CATEGORY	A	B	C	D
LPV DA	3006-1	250 (300-1)		NA
LNAV/VNAV DA	3051-1	295 (300-1)		NA
LNAV MDA	3140-1	384 (400-1)		NA
CIRCLING	3280-1 524 (600-1)	3360-1 604 (700-1)		NA

NC-1, 11 JUN 2026 to 09 JUL 2026

NC-1, 11 JUN 2026 to 09 JUL 2026