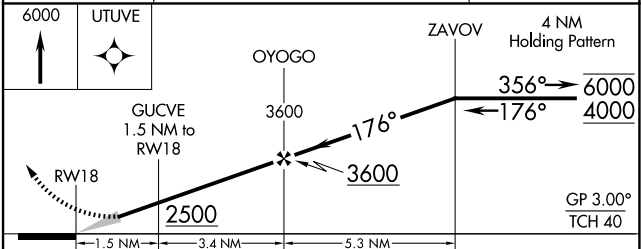
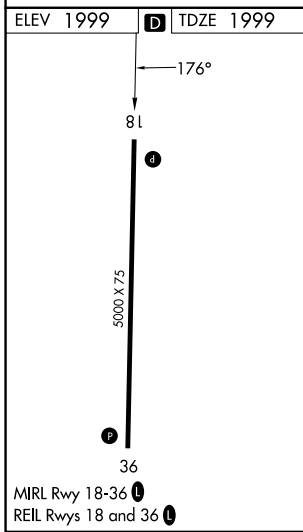
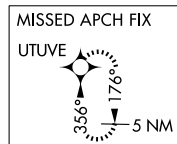
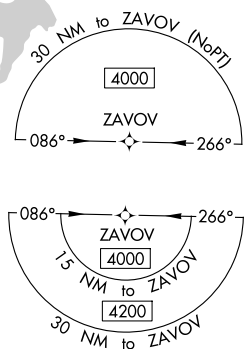
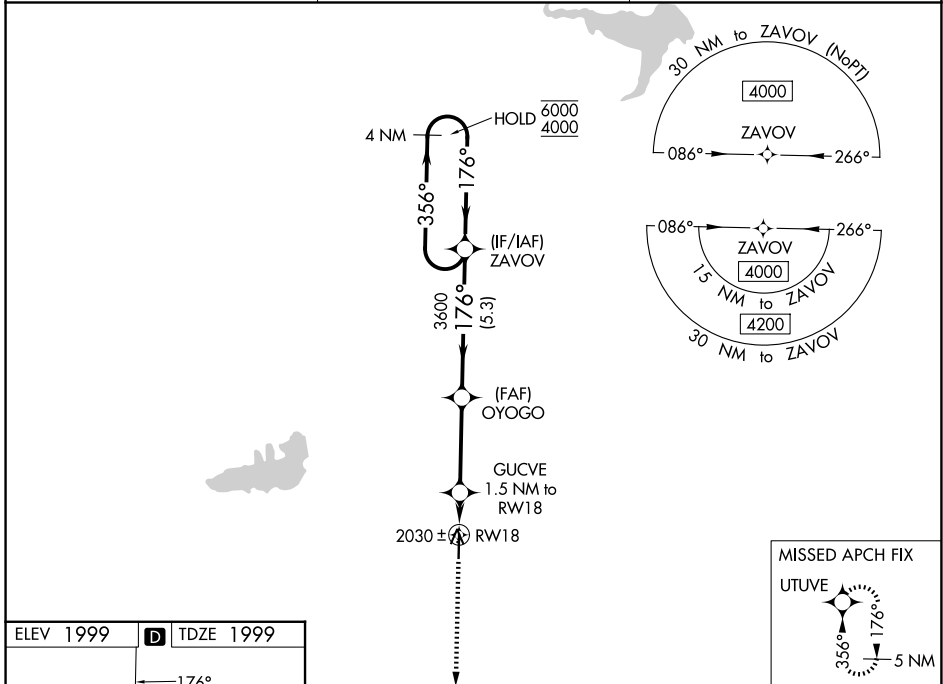


WAAS CH 82432 W18A	APP CRS 176°	Rwy Ldg TDZE Apt Elev	5000 1999 1999
--	------------------------	-----------------------------	---

RNAV (GPS) RWY 18

ROOKS COUNTY RGNL (RCP)

RNP APCH - GPS.		MISSED APPROACH: Climb to 6000 direct UTUVE and hold, continue climb-in-hold to 6000.
	Circling NA west of Rwy 18-36. For uncompensated Baro-VNAV systems, LNAV/VNAV NA below -18°C or above 54°C.	
AWOS-3PT 120.075	DENVER CENTER 132.7 226.675	CTAF 122.9



CATEGORY	A	B	C	D
LPV DA		2290-1 291 (300-1)		NA
LNAV/VNAV DA		2340-1 341 (400-1)		NA
LNAV MDA		2360-1 361 (400-1)		NA
CIRCLING	2460-1 461 (500-1)	2480-1 481 (500-1)	2500-1½ 501 (600-1½)	NA

NC-2, 11 JUN 2026 to 09 JUL 2026

NC-2, 11 JUN 2026 to 09 JUL 2026