

| | | | |
|--|------------------------|-----------------------------|---|
| WAAS CH 49246 W16A | APP CRS 157° | Rwy Idg TDZE Apt Elev | 3700 1729 1730 |
|--|------------------------|-----------------------------|---|

RNAV (GPS) RWY 16

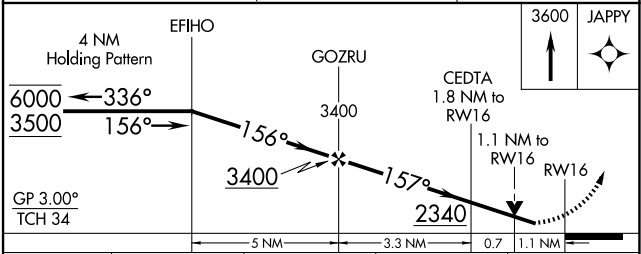
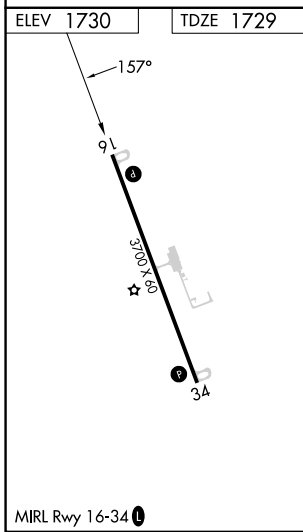
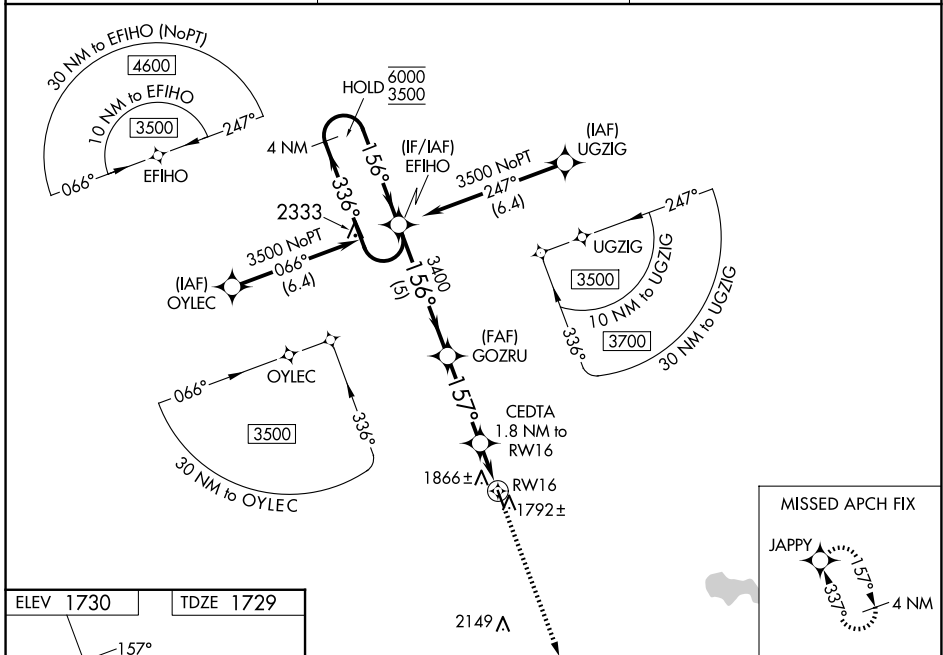
WILDER (6E5)

RNP APCH - GPS.

⚠ For uncompensated Baro-VNAV systems, LNAV/VNAV NA below -18°C or above 54°C. Rwy 16 helicopter visibility reduction below 3/4 SM NA. Baro-VNAV and VDP NA when using MDS altimeter setting. When local altimeter setting not received, use MDS altimeter setting and increase LPV DA to 2055 feet; increase LNAV/VNAV DA to 2200 feet and all visibilities 1/2 SM. Increase all MDAs 80 feet.

MISSED APPROACH: Climb to 3600 direct JAPPY and hold.

| | | |
|--------------------------|---|-----------------------|
| AWOS-3P 118.15 | MINNEAPOLIS CENTER 126.25 339.8 | CTAF 122.90 |
|--------------------------|---|-----------------------|



| CATEGORY | A | B | C | D |
|--------------|-----------------------|-----------------------|---|----|
| LPV DA | 1979-1 | 250 (300-1) | | NA |
| LNAV/VNAV DA | 2120-1 1/8 | 391 (400-1 1/8) | | NA |
| LNAV MDA | 2120-1 | 391 (400-1) | | NA |
| CIRCLING | 2180-1 450 (500-1) | 2220-1 490 (500-1) | | NA |

NC-1, 11 JUN 2026 to 09 JUL 2026

NC-1, 11 JUN 2026 to 09 JUL 2026