

WAAS CH <b>50343</b> <b>W22A</b>	APP CRS <b>220°</b>	Rwy Ldg TDZE Apt Elev <b>5000</b> <b>5577</b> <b>5589</b>
--	------------------------	--

# RNAV (GPS) RWY 22

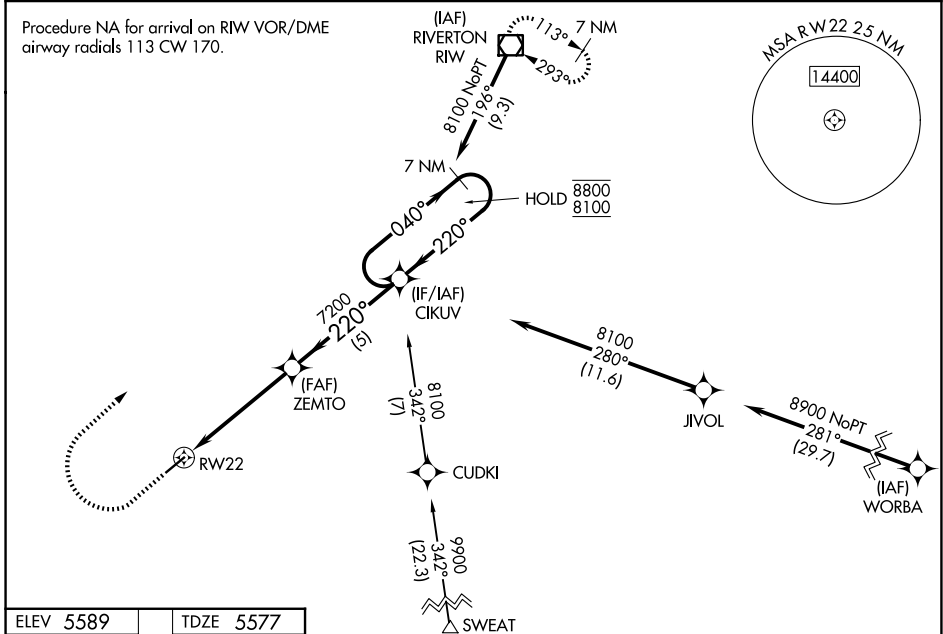
HUNT FLD (LND)

RNP APCH.

**⚠** Circling NA southeast of Rwy 4 and 22. Circling Rwy 4 NA at night. Rwy 22 helicopter visibility reduction below 3/4 SM NA. For uncompensated Baro-VNAV systems, LNAV/VNAV NA below -26°C or above 54°C.

MISSED APPROACH: (Do not exceed 165K until R/W VOR/DME) Climb to 6280 then climbing right turn to 8200 direct R/W VOR/DME and hold. #Missed approach requires minimum climb of 355 feet per NM to 6700.

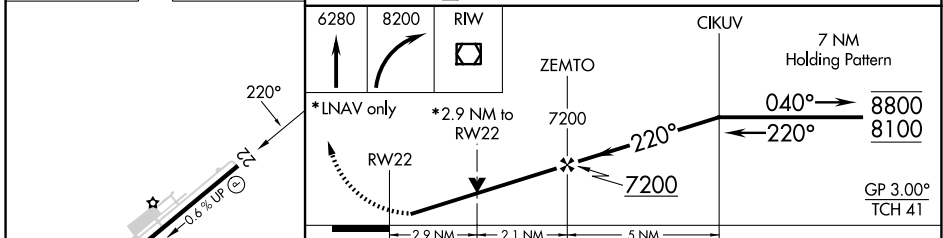
ASOS <b>118.15</b>	SALT LAKE CENTER <b>133.25 285.6</b>	UNICOM <b>122.8 (CTAF) 0</b>
-----------------------	---	---------------------------------



NW-1, 11 JUN 2026 to 09 JUL 2026

NW-1, 11 JUN 2026 to 09 JUL 2026

ELEV 5589	TDZE 5577
-----------	-----------



6280	8200	R/W	CIKUV	7 NM Holding Pattern
↑	↷	◻	ZEMTO	040° → 8800
*LNAV only	*2.9 NM to RWY 22			← 220° 8100
				GP 3.00°
				TCH 41
	2.9 NM	2.1 NM	5 NM	

CATEGORY	A	B	C	D
LPV DA#	5827-3/4	250 (300-3/4)		NA
LPV DA	6060-1 3/8	483 (500-1 3/8)		NA
LNAV/VNAV DA	6040-1 3/8	463 (500-1 3/8)		NA
LNAV MDA	6460-1 1/4	883 (900-1 1/4)	6460-2 1/2 883 (900-2 1/2)	NA
CIRCLING	6460-1 1/4	871 (900-1 1/4)	6540-3 951 (1000-3)	NA

REIL Rwy 4 and 22 **0**  
MIRL Rwy 4-22 **0**