

WAAS CH <b>69447</b> <b>W08A</b>	APP CRS <b>083°</b>	Rwy Ldg TDZE Apt Elev	<b>5330</b> <b>5152</b> <b>5152</b>
--	------------------------	-----------------------------	---

# RNAV (GPS) RWY 8

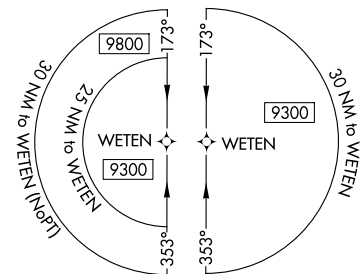
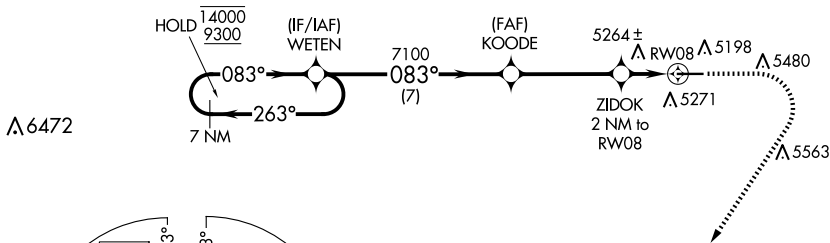
PINE BLUFFS MUNI (82V)

RNP APCH - GPS.

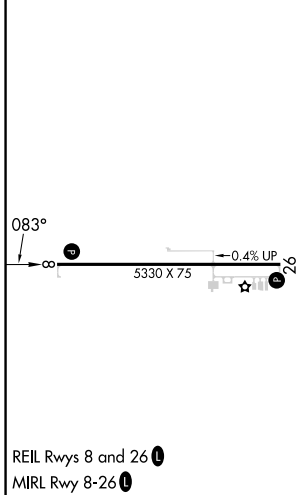
⚠ For uncompensated Baro-VNAV systems, LNAV/VNAV NA below -22°C or above 54°C. Procedure NA at night.

MISSED APPROACH: Climb to 5800 then climbing right turn to 9300 direct SHOOP and hold, continue climb-in-hold to 9300.

AWOS-3PT <b>132.425</b>	DENVER CENTER <b>125.9 284.7</b>	UNICOM <b>122.8 (CTAF) 0</b>
----------------------------	-------------------------------------	---------------------------------



ELEV 5152	TDZE 5152
-----------	-----------



	7 NM Holding Pattern		VGSIs and RNAV glidepath not coincident (VGSIs Angle 3.00/TCH 25).		5800	9300	SHOOP
	14000	9300	7100	7100	ZIDOK	5840	△
	GP 3.00° TCH 40		7 NM	4 NM	1.1 NM	1.1 NM	
CATEGORY	A		B		C		D
LPV DA	5402-1		250 (300-1)				NA
LNAV/VNAV DA	5531-1		379 (400-1)				NA
LNAV MDA	5520-1		368 (400-1)				NA
CIRCLING	5620-1 468 (500-1)	5680-1 528 (600-1)	5780-1¾ 628 (700-1¾)				NA

NW-1, 11 JUN 2026 to 09 JUL 2026

NW-1, 11 JUN 2026 to 09 JUL 2026