

APP CRS	Rwy Ldg	<b>3189</b>
<b>015°</b>	TDZE	<b>539</b>
	Apt Elev	<b>539</b>

# RNAV (GPS) RWY 1

SALUDA COUNTY (6J4)

RNP APCH.

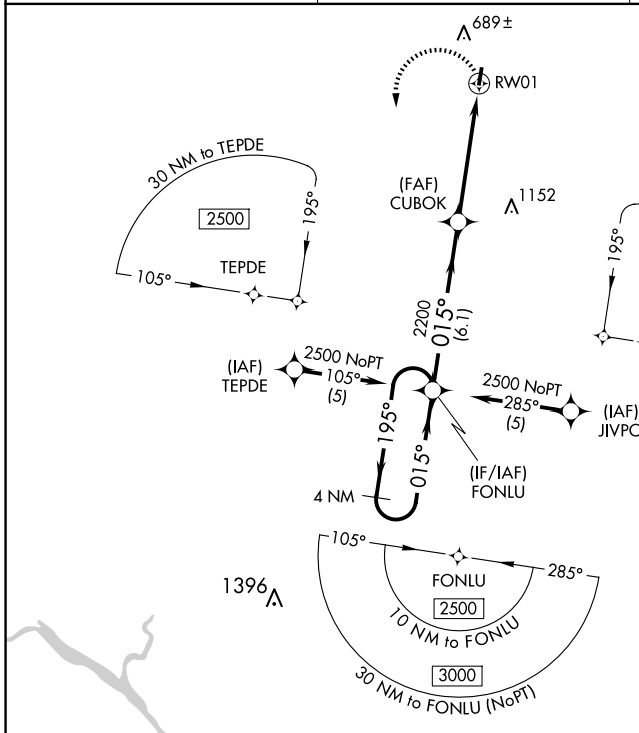
**⚠** Procedure NA at night. Rwy 1 helicopter visibility reduction below 1 SM NA. Use Aiken altimeter setting; when not received, use Augusta Rgnl at Bush Fld altimeter setting and increase all MDA 100 feet and increase LNAV Cat C visibility ¼ SM.

**MISSED APPROACH:**  
Climbing left turn to 2500 direct FONLU and hold.

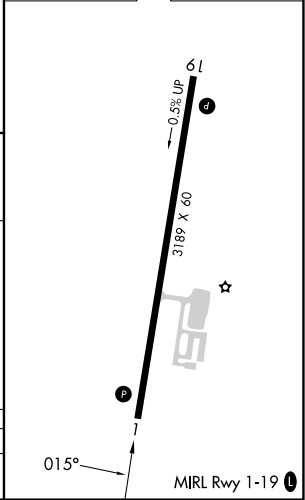
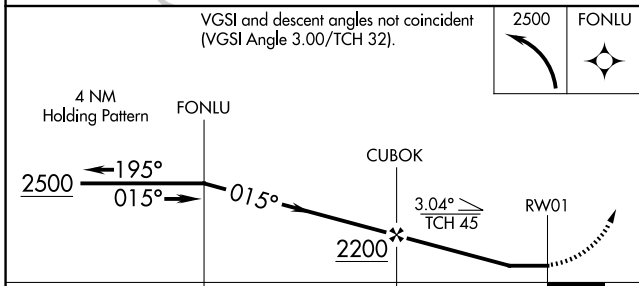
AIK AWOS-3PT  
**118.025**

AUGUSTA APP CON ★  
**119.15**

CTAF  
**122.9**



ELEV 539	TDZE 539
----------	----------



CATEGORY	A	B	C	D
LNAV MDA	1160-1	621 (700-1)	1160-1¼ 621 (700-1¼)	NA

SE-2, 11 JUN 2026 to 09 JUL 2026

SE-2, 11 JUN 2026 to 09 JUL 2026