

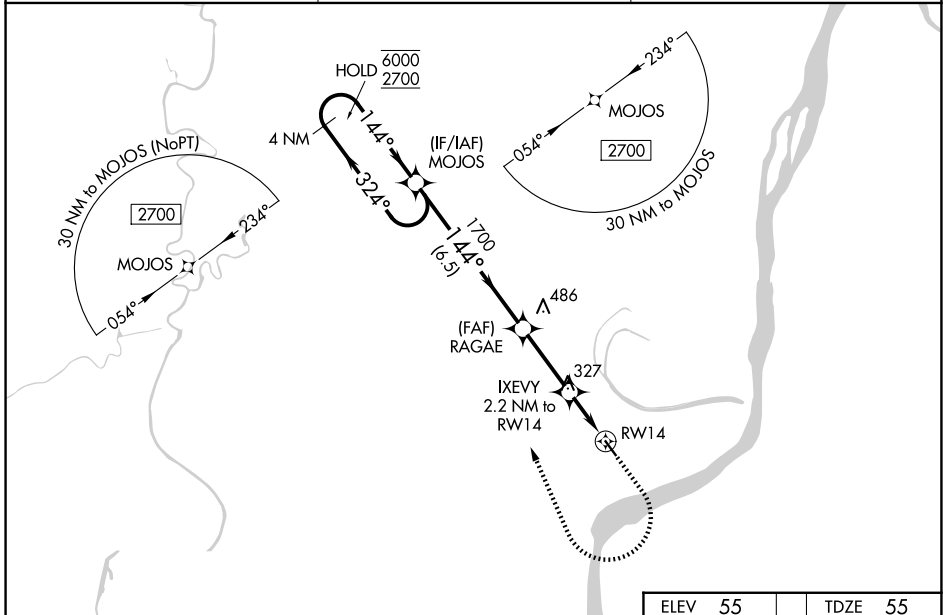
WAAS CH 78337 W14A	APP CRS 144°	Rwy Ldg TDZE Apt Elev	3701 55 55
--	------------------------	-----------------------------	---------------------------------------

RNAV (GPS) RWY 14

CONCORDIA PARISH (ØR4)

RNP APCH - GPS.	<p>⚠ Rwy 14 helicopter visibility reduction below ¼ SM NA. For uncompensated Baro-VNAV systems, LNAV/VNAV NA below -15°C or above 54°C. When local altimeter setting not received, use Natchez altimeter setting and increase LPV DA to 408 feet; increase LNAV/VNAV DA to 540 feet and all visibilities ½ SM; increase all MDAs 60 feet and LNAV visibility Cat C ¼ SM, and Circling visibility Cat C ¼ SM. Baro-VNAV and VDP NA when using Natchez altimeter setting.</p>	<p>MISSED APPROACH: Climb to 1000 then climbing right turn to 3000 direct MOJOS and hold.</p>
-----------------	--	--

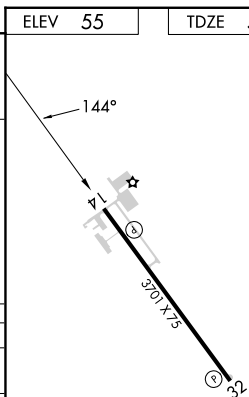
AWOS-3 118.2	HOUSTON CENTER 120.975 299.6	UNICOM 122.8 (CTAF) 0
------------------------	--	---------------------------------



SC-4, 11 JUN 2026 to 09 JUL 2026

SC-4, 11 JUN 2026 to 09 JUL 2026

		ELEV 55	TDZE 55
4 NM Holding Pattern		1000	3000
MOJOS		MOJOS	
<p>6000 ← 324°</p> <p>2700 → 144°</p> <p>GP 3.00°</p> <p>TCH 51</p>		RAGAE	IXEVEY
<p>1700</p> <p>800</p>		1700	2.2 NM to RWY 14
<p>6.5 NM</p> <p>2.8 NM</p> <p>0.7 NM</p> <p>1.5 NM</p>		1.5 NM to RWY 14	RWY 14
CATEGORY	A	B	C
LPV DA	352-1 297 (300-1)		NA
LNAV/VNAV DA	484-1¼ 429 (500-1¼)		NA
LNAV MDA	580-1	525 (600-1)	580-1½ 525 (600-1½)
CIRCLING	680-1	625 (700-1)	960-2¾ 905 (1000-2¾)



MIRL Rwy 14-32 0
REIL Rwys 14 and 32 0