

WAAS CH <b>72914</b> <b>W01A</b>	APP CRS <b>008°</b>	Rwy Ldg <b>3700</b> TDZE <b>1774</b> Apt Elev <b>1774</b>
--	------------------------	---

# RNAV (GPS) RWY 1

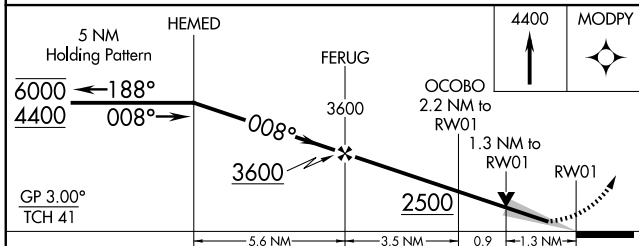
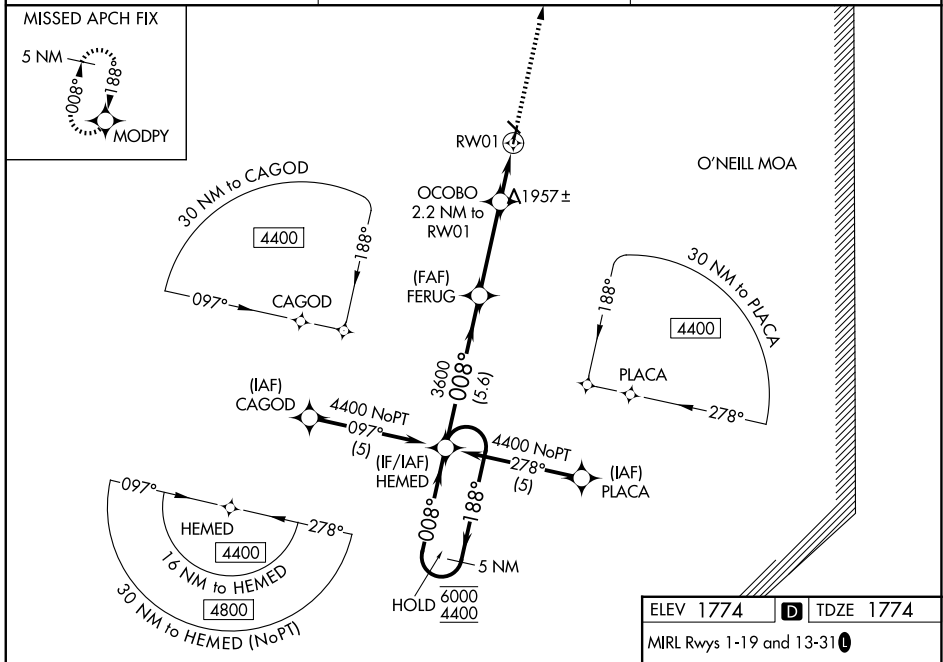
ANTELOPE COUNTY (4V9)

RNP APCH - GPS.

**⚠** Baro-VNAV and VDP NA when using BVN altimeter setting. For uncompensated Baro-VNAV systems, LNAV/VNAV NA below -18°C or above 54°C. Circling to Rwy 13, 31 NA at night. When local altimeter setting not received, use BVN altimeter setting and increase LPV DA to 2032 feet; increase LNAV/VNAV DA to 2227 feet and all visibilities ¼ SM. Increase all MDAs 60 feet.

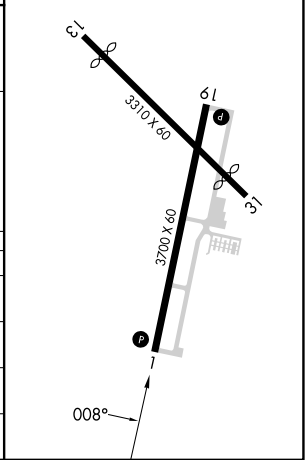
MISSED APPROACH: Climb to 4400 direct MODPY and hold, continue climb-in-hold to 4400.

AWOS-3PT <b>119.275</b>	MINNEAPOLIS CENTER <b>128.0 257.95</b>	UNICOM <b>122.8 (CTAF) 1</b>
----------------------------	---	---------------------------------



ELEV 1774 **D** TDZE 1774

MIRL Rwys 1-19 and 13-31 **1**



CATEGORY	A	B	C	D
LPV DA	1974-¾	200 (200-¾)		NA
LNAV/VNAV DA	2169-1½	395 (400-1½)		NA
LNAV MDA	2220-1	446 (500-1)		NA
CIRCLING	2260-1 486 (500-1)	2380-1 606 (700-1)		NA

NC-2, 11 JUN 2026 to 09 JUL 2026

NC-2, 11 JUN 2026 to 09 JUL 2026