

WAAS CH 50133 W11A	APP CRS 105°	Rwy Ldg TDZE 1183 Apt Elev 1183
--	------------------------	---

RNAV (GPS) RWY 11

PAYNESVILLE MUNI (PEX)

RNP APCH - GPS.

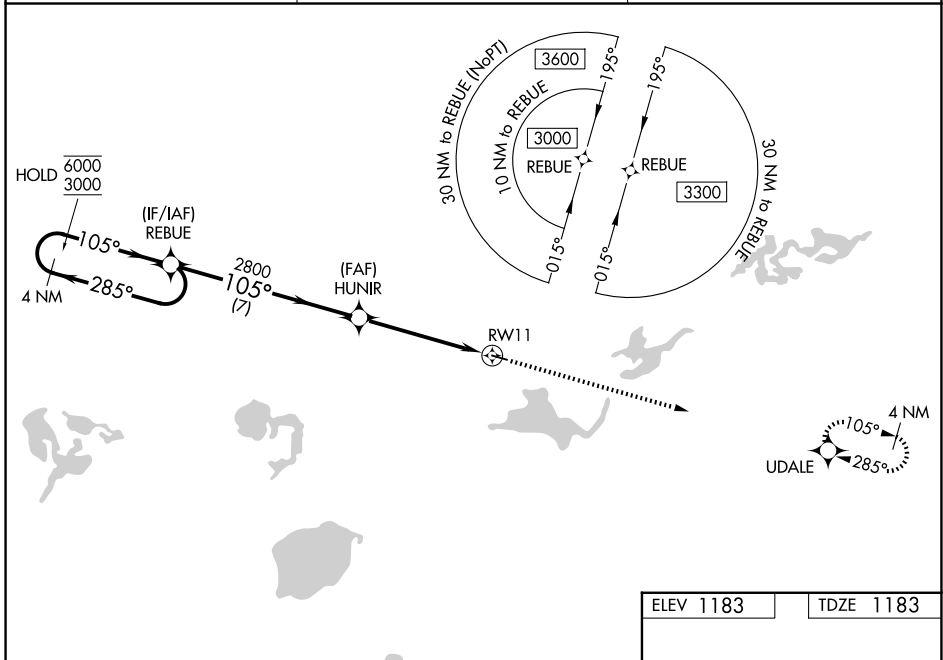
⚠ Baro-VNAV and VDP NA when using Lf altimeter setting. For uncompensated Baro-VNAV systems, LNAV/VNAV NA below -17°C or above 54°C. When local altimeter setting not received, use Lf altimeter setting and increase LPV DA to 1434 feet; increase LNAV/VNAV DA to 1704 feet and all visibilities $\frac{1}{8}$ SM. Increase all MDAs 60 feet and LNAV and Circling visibility Cat C $\frac{1}{4}$ SM.

MISSED APPROACH:
Climb to 3000 direct
UDALE and hold.

AWOS-3PT
120.35

MINNEAPOLIS CENTER
125.5 323.1

CTAF
122.9



NC-1, 11 JUN 2026 to 09 JUL 2026

NC-1, 11 JUN 2026 to 09 JUL 2026

ELEV 1183	TDZE 1183
-----------	-----------

3000	UDALE
------	-------

105°	285°
------	------

1.4 NM	RW11
--------	------

3302 x 75

MIRL Rwy 11-29
REIL Rws 11 and 29

4 NM Holding Pattern	REBUE	HUNIR	RW11
6000 3000	285° 105°	2800	1.4 NM
GP 3.00° TCH 42	7 NM	3.5 NM	1.4 NM

CATEGORY	A	B	C	D
LPV DA	1383-1 200 (200-1)			NA
LNAV/VNAV DA	1653-1 $\frac{3}{8}$ 470 (500-1 $\frac{3}{8}$)			NA
LNAV MDA	1680-1 497 (500-1)		1680-1 $\frac{3}{8}$ 497 (500-1 $\frac{3}{8}$)	NA
CIRCLING	1680-1 497 (500-1)	1760-1 577 (600-1)	1920-2 737 (800-2)	NA