

WAAS CH 86909 W02A	APP CRS 026°	Rwy Ldg TDZE Apt Elev	5500 1028 1028
--	------------------------	-----------------------------	---

RNAV (GPS) RWY 2

MOREHEAD-ROWAN COUNTY CLYDE A THOMAS RGNL (SYM)

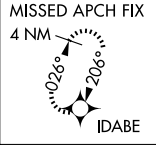
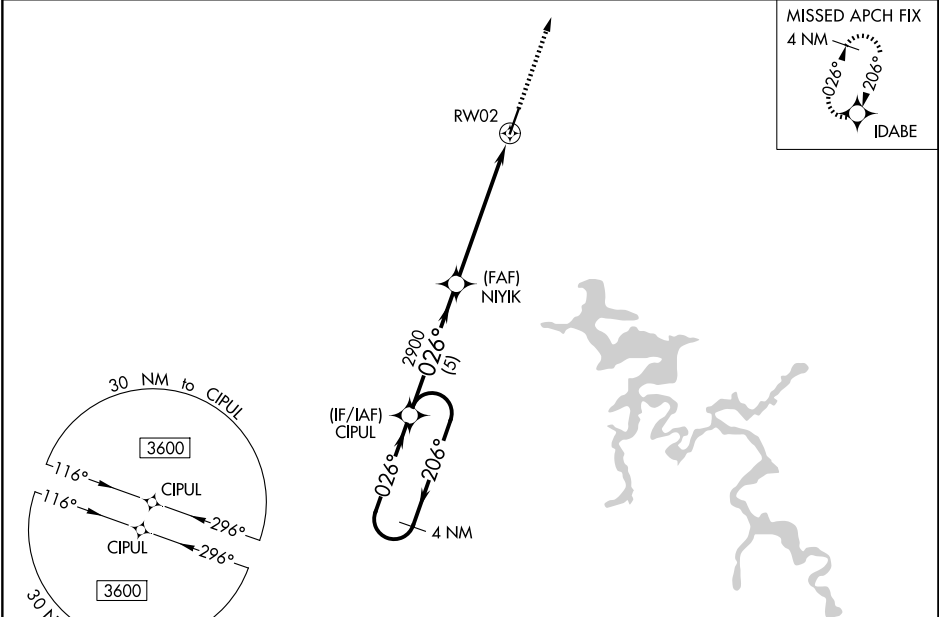
⚠ For uncompensated Baro-VNAV systems, LNAV/VNAV NA below -17°C (2°F) or above 54°C (130°F). DME/DME RNP-0.3 NA. Baro-VNAV and VDP NA when using Mount Sterling altimeter setting. When local altimeter setting not received, use Mount Sterling altimeter setting: increase all DA 50 feet and all MDA 60 feet; increase LPV all Cats and LNAV Cats C/D visibility 1/8 mile, LNAV/VNAV all Cats visibility 1/4 mile, and Circling Cats C/D visibility 1/4 mile.

MISSED APPROACH:
Climb to 3600 direct IDABE and hold.

AWOS-3
119.95

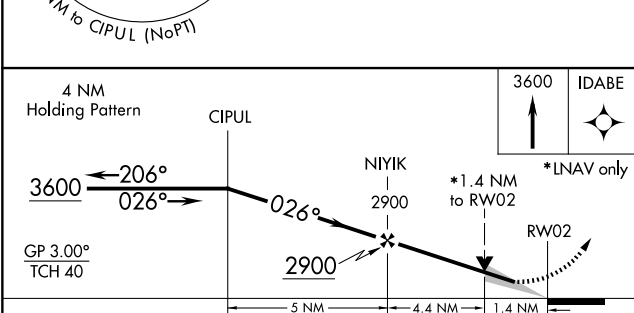
INDIANAPOLIS CENTER
124.225 360.725

UNICOM
122.7 (CTAF) 0

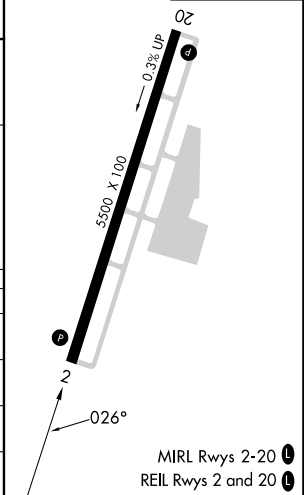


SE-1, 11 JUN 2026 to 09 JUL 2026

SE-1, 11 JUN 2026 to 09 JUL 2026



ELEV 1028	TDZE 1028
-----------	-----------



CATEGORY	A	B	C	D
LPV DA		1228-3/4	200 (200-3/4)	
LNAV/VNAV DA		1439-1 3/8	411 (500-1 3/8)	
LNAV MDA	1500-1	472 (500-1)	1500-1 3/8	472 (500-1 3/8)
CIRCLING	1520-1	492 (500-1)	1760-2 732 (800-2)	1820-2 1/2 792 (800-2 1/2)