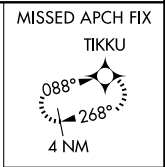
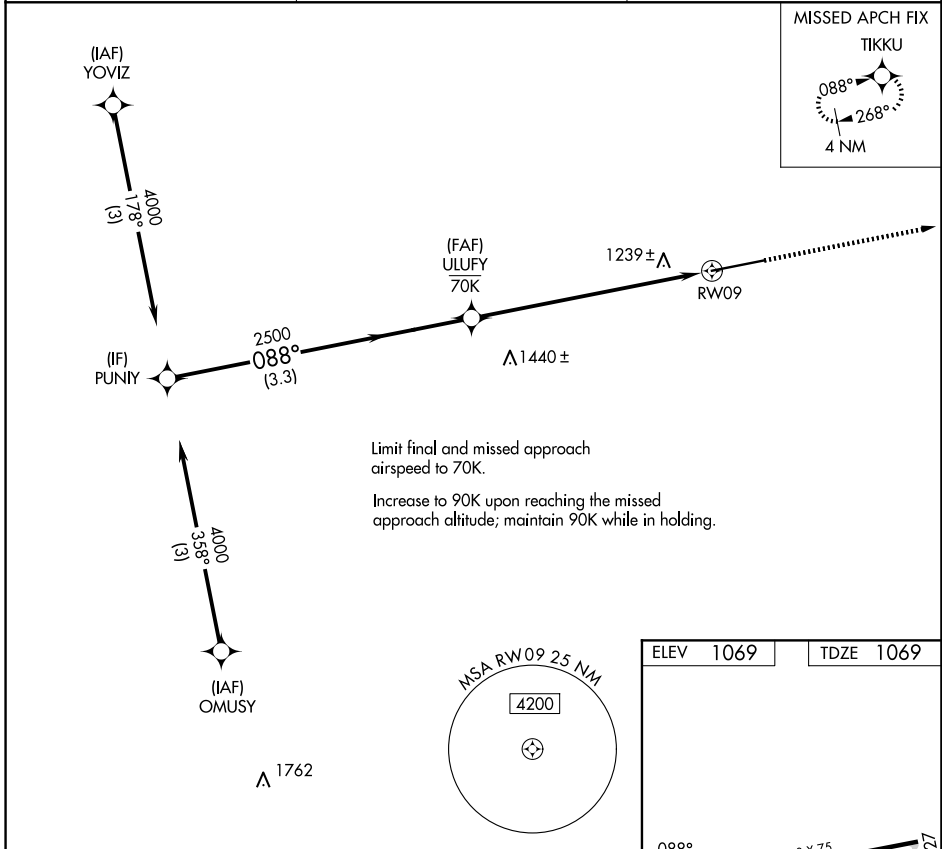


COPTER RNAV (GPS) Y RWY 9 GREENE COUNTY (WAY)

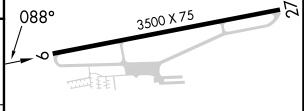
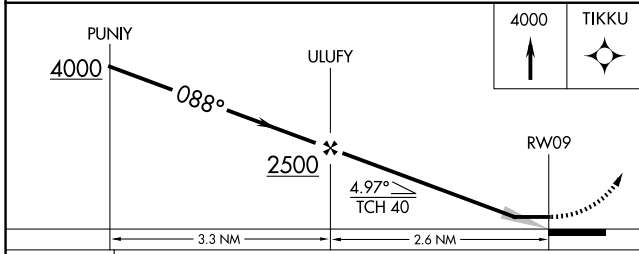
APP CRS 088°	Rwy Ldg TDZE Apt Elev	3500 1069 1069
------------------------	-----------------------------	---

RNP APCH - GPS.	MISSED APPROACH: Climb to 4000 direct TIKKU and hold, continue climb-in-hold to 4000.
-----------------	---

AFJ AWOS-3PT 119.175	CLARKSBURG APP CON★ 121.15 284.65	UNICOM 122.8 (CTAF)
--------------------------------	---	-------------------------------



ELEV 1069	TDZE 1069
-----------	-----------



CATEGORY	COPTER	
LNAV MDA	1560-1	491 (500-1)

NE-4, 11 JUN 2026 to 09 JUL 2026

NE-4, 11 JUN 2026 to 09 JUL 2026