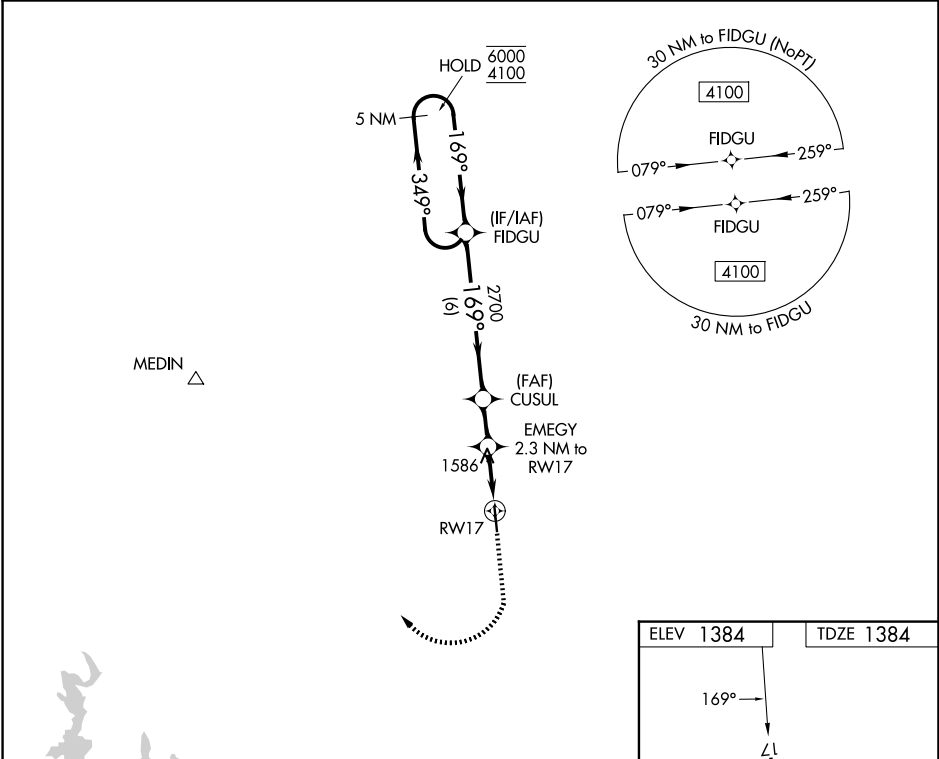


WAAS CH 50528 W17A	APP CRS 169°	Rwy Ldg TDZE Apt Elev	4377 1384 1384
--	------------------------	-----------------------------	---

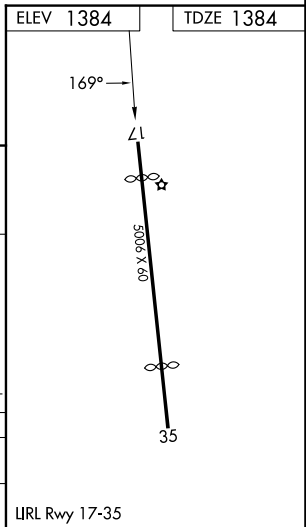
RNAV (GPS) RWY 17

BOERNE STAGE AIRFIELD (5C1)

RNP APCH-GPS.		MISSED APPROACH: Climb to 1900 then climbing right turn to 4100 direct MEDIN.
AWOS-3 118.725	SAN ANTONIO APP CON 125.1 307.0	UNICOM 123.0 (CTAF)



5 NM Holding Pattern		1900	4100	MEDIN
FIDGU		CUSUL		
6000 ← 349°		EMEGY 2.3 NM to RWY 17		
4100 → 169°		TCH 40		
		RWY 17		
		2700		
		2140		
6 NM		1.7 NM		2.3 NM
CATEGORY	A	B	C	D
IP MDA	1840-1	456 (500-1)	NA	
LNAV MDA	1840-1	456 (500-1)	NA	



SC-3, 11 JUN 2026 to 09 JUL 2026

SC-3, 11 JUN 2026 to 09 JUL 2026