

APP CRS	Rwy Idg	<b>2962</b>
<b>144°</b>	TDZE	<b>839</b>
	Apt Elev	<b>839</b>

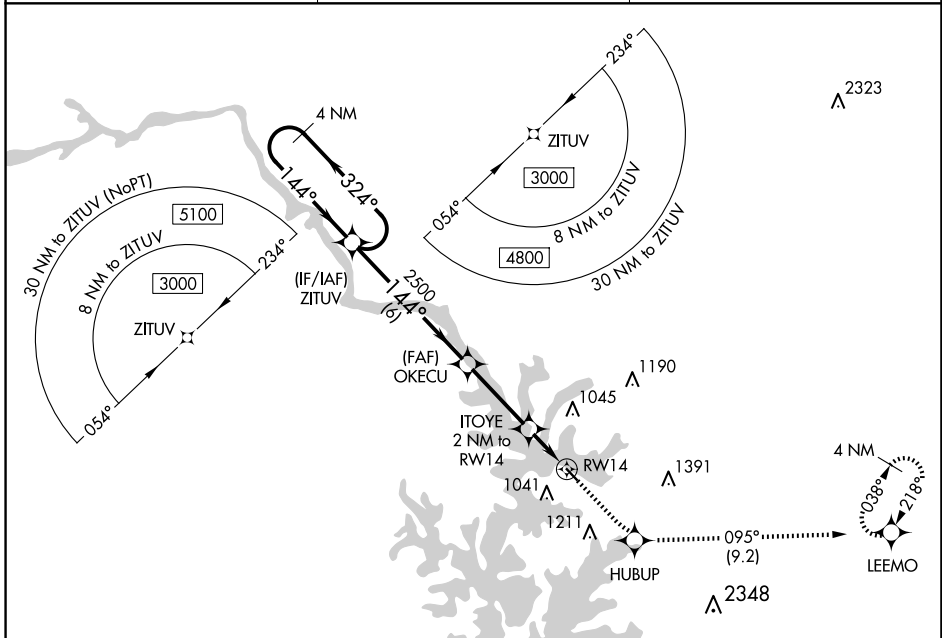
# RNAV (GPS) RWY 14

LAKE NORMAN AIRPARK (14A)

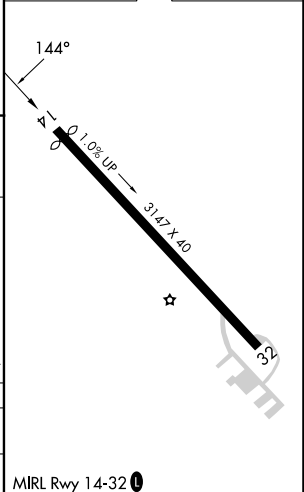
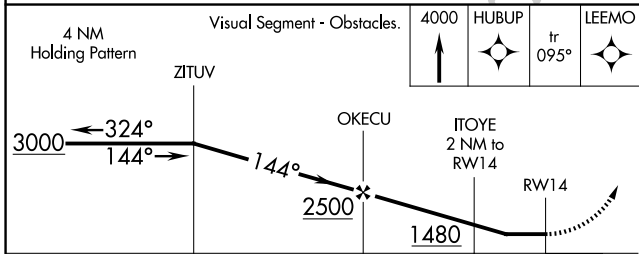
**NA** Procedure NA at night. DME/DME RNP-0.3 NA. Use Statesville altimeter setting; when not received, use Charlotte altimeter setting and increase all MDA 40 feet. Rwy 14, 32 helicopter visibility reduction below 1 SM NA.

MISSED APPROACH: Climb to 4000 direct HUBUP and on track 095° to LEEMO and hold, continue climb-in-hold to 4000.

SVH AWOS-3 <b>119.225</b>	CHARLOTTE APP CON <b>134.75 257.2</b>	UNICOM <b>122.8 (CTAF)</b>
------------------------------	--	-------------------------------



ELEV	839	TDZE	839
------	-----	------	-----



CATEGORY	A	B	C	D
LNVA MDA	1360-1	521 (600-1)	NA	
CIRCLING	1440-1 601 (700-1)	1500-1 661 (700-1)	NA	

MIRL Rwy 14-32

SE-2, 11 JUN 2026 to 09 JUL 2026

SE-2, 11 JUN 2026 to 09 JUL 2026