

WAAS CH <b>56529</b> <b>W07A</b>	APP CRS <b>067°</b>	Rwy Idg TDZE <b>3490</b> Apt Elev <b>3490</b>	<b>5099</b>
--	------------------------	---	-------------

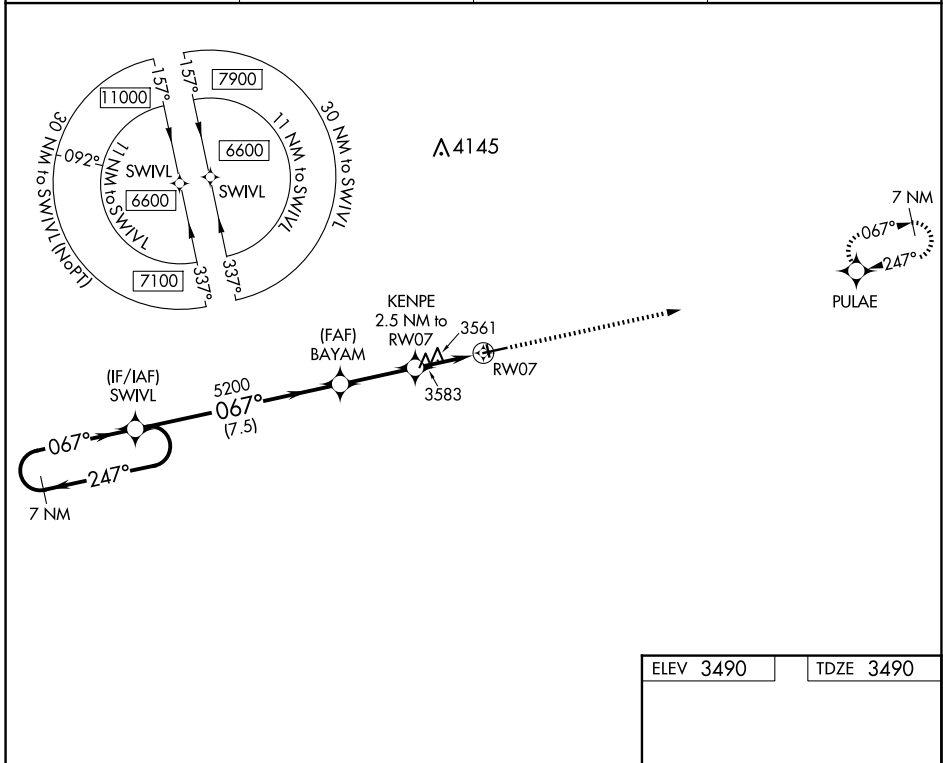
# RNAV (GPS) RWY 7

ROUNDUP (RPX)

**NA** Use Billings altimeter setting, when not received, procedure NA.  
When VGSI inop, Straight-in/Circling Rwy 7 procedure NA at night.  
DME/DME RNP-0.3 NA. Visibility reduction by helicopters NA.

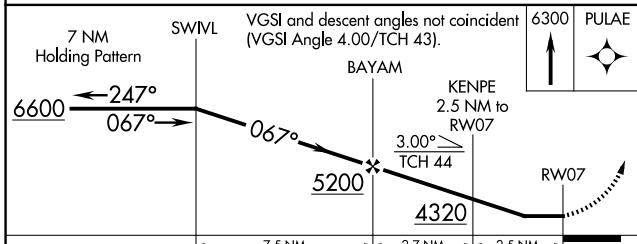
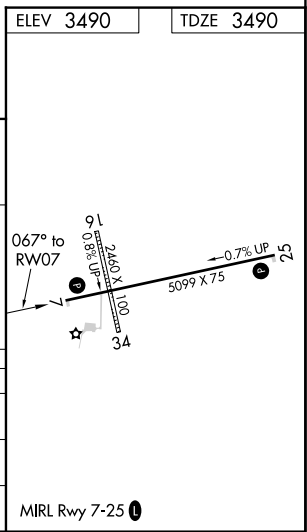
MISSED APPROACH: Climb to 6300 direct PULAE and hold.

BIL ASOS <b>126.3</b>	SALT LAKE CENTER <b>126.85 305.2</b>	UNICOM <b>122.8</b> (CTAF)	<b>122.7</b>
--------------------------	---	-------------------------------	--------------



NW-1, 11 JUN 2026 to 09 JUL 2026

NW-1, 11 JUN 2026 to 09 JUL 2026



CATEGORY	A	B	C	D
LP MDA	3940-1 450 (500-1)	3940-1 $\frac{3}{8}$ 450 (500-1 $\frac{3}{8}$ )	3940-1 $\frac{3}{8}$ 450 (500-1 $\frac{3}{8}$ )	3940-1 $\frac{3}{8}$ 450 (500-1 $\frac{3}{8}$ )
LNAV MDA	3960-1 470 (500-1)	3960-1 $\frac{3}{8}$ 470 (500-1 $\frac{3}{8}$ )	3960-1 $\frac{3}{8}$ 470 (500-1 $\frac{3}{8}$ )	3960-1 $\frac{3}{8}$ 470 (500-1 $\frac{3}{8}$ )
CIRCLING	4000-1 510 (600-1)	4140-1 $\frac{3}{4}$ 650 (700-1 $\frac{3}{4}$ )	4340-2 $\frac{3}{4}$ 850 (900-2 $\frac{3}{4}$ )	4340-2 $\frac{3}{4}$ 850 (900-2 $\frac{3}{4}$ )