

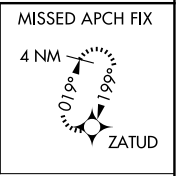
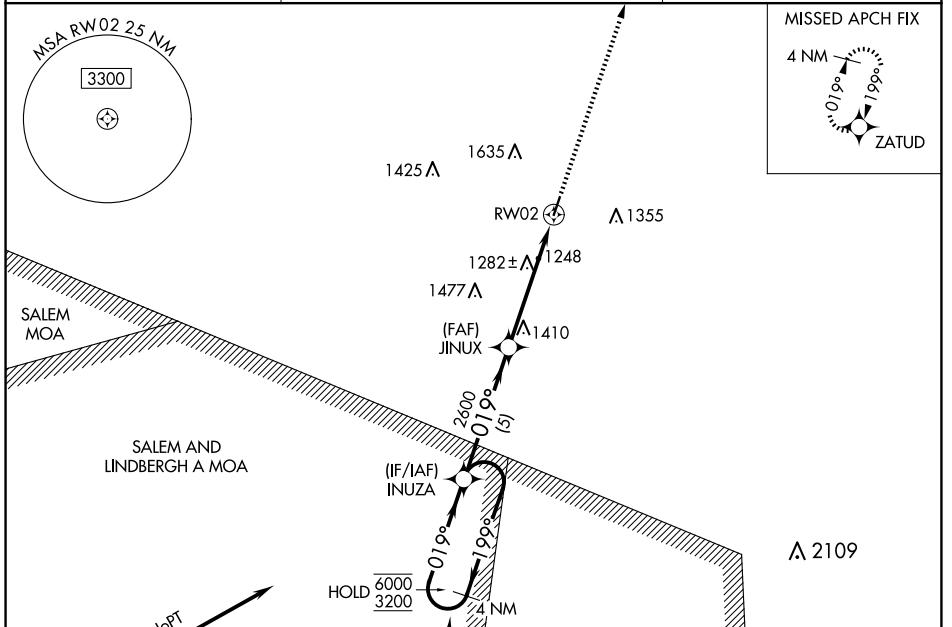
WAAS CH 93624 W02A	APP CRS 019°	Rwy Idg TDZE Apt Elev	4000 959 959
--	------------------------	-----------------------------	---

RNAV (GPS) RWY 2

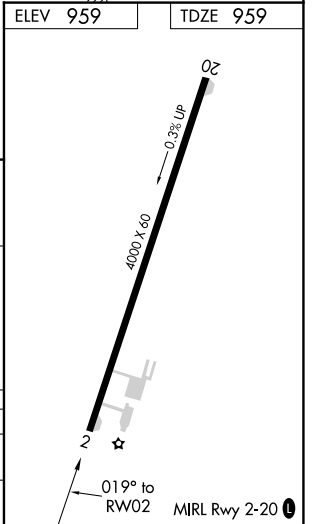
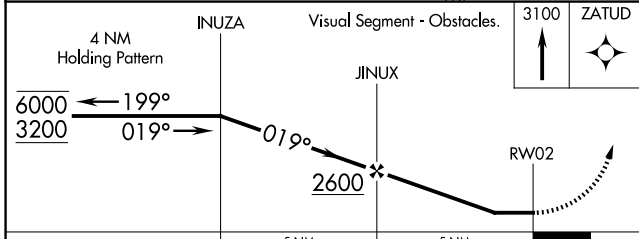
WASHINGTON COUNTY (8WC)

RNP APCH-GPS.		MISSED APPROACH: Climb to 3100 direct ZATUD and hold.
NA Rwy 2 helicopter visibility reduction below 3/4 SM NA. Use Farmington altimeter setting.		

FAM AWOS-3PT 119.275	KANSAS CITY CENTER 128.35 284.675	UNICOM 123.0 (CTAF)
--------------------------------	---	-------------------------------



ELEV 959	TDZE 959
----------	----------



CATEGORY	A	B	C	D
LP MDA	1680-1	721 (800-1)		NA
LNAV MDA	1760-1 801 (900-1)	1760-1¼ 801 (900-1¼)		NA

NC-3, 11 JUN 2026 to 09 JUL 2026

NC-3, 11 JUN 2026 to 09 JUL 2026